

## Product datasheet for **AP17213PU-N**

### Chromogranin C (SCG2) (Center) Rabbit Polyclonal Antibody

#### Product data:

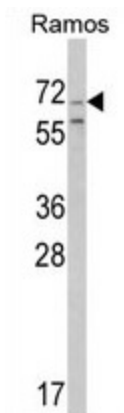
Product Type:	Primary Antibodies
Applications:	WB
Recommended Dilution:	Western blot: 1:50 - 1:100. ELISA: 1:1,000.
Reactivity:	Human
Host:	Rabbit
Clonality:	Polyclonal
Immunogen:	KLH conjugated synthetic peptide selected from the Center region of human chromogranin-C
Specificity:	This antibody detects Chromogranin-C at Center.
Formulation:	PBS with 0.40% (W/V) sodium azide State: Liquid Ig fraction
Concentration:	lot specific
Purification:	Prepared by Saturated Ammonium Sulfate (SAS) precipitation followed by dialysis against PBS
Conjugation:	Unconjugated
Storage:	Store the antibody at 2 - 8 °C up to one month or (in aliquots) at -20 °C for longer. Avoid repeated freezing and thawing.
Stability:	Shelf life: one year from despatch.
Gene Name:	secretogranin II
Database Link:	<a href="#">Entrez Gene 7857 Human P13521</a>
Background:	Chromogranin-C is a member of the chromogranin/secretogranin family of neuroendocrine secretory proteins. Studies in rodents suggest that the full-length protein, secretogranin II, is involved in the packaging or sorting of peptide hormones and neuropeptides into secretory vesicles. The full-length protein is cleaved to produce the active peptide secretoneurin, which exerts chemotactic effects on specific cell types, and EM66, whose function is unknown.
Synonyms:	Secretogranin II, Sg-II, SgII, Chromogranin-C, CHGC
Note:	Molecular weight: 70941 Da



[View online »](#)

Protein Families: Secreted Protein, Transmembrane

### Product images:



Western blot analysis of hromogranin-C Antibody (Center) in Ramos cell line lysates (35 ug/lane). SCG2 (arrow) was detected using the purified Pab.