

Product datasheet for **AP17212PU-N**

RCBTB2 (N-term) Rabbit Polyclonal Antibody

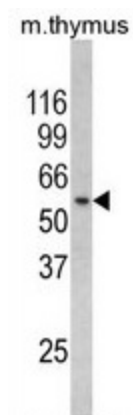
Product data:

Product Type:	Primary Antibodies
Applications:	WB
Recommended Dilution:	Western blot: 1:50 - 1:100. ELISA: 1:1,000.
Reactivity:	Human
Host:	Rabbit
Clonality:	Polyclonal
Immunogen:	KLH conjugated synthetic peptide selected from the N-terminal region of human CHC1L
Specificity:	This antibody detects CHC1L at N-term.
Formulation:	PBS with 0.09% (W/V) sodium azide State: Liquid Ig fraction
Concentration:	lot specific
Purification:	Prepared by Saturated Ammonium Sulfate (SAS) precipitation followed by dialysis against PBS
Conjugation:	Unconjugated
Storage:	Store the antibody at 2 - 8 °C up to one month or (in aliquots) at -20 °C for longer. Avoid repeated freezing and thawing.
Stability:	Shelf life: one year from despatch.
Gene Name:	RCC1 and BTB domain containing protein 2
Database Link:	Entrez Gene 1102 Human O95199
Background:	RCBTB2 is a member of the RCC1-related GEF family. The N-terminal half of the amino acid sequence shows similarity to the regulator of chromosome condensation RCC1, which acts as a guanine nucleotide exchange factor (GEF) protein for the Ras-related GTPase Ran.
Synonyms:	RLG
Note:	Molecular weight: 60315 Da



[View online »](#)

Product images:



Western blot analysis of CHC1L Antibody (N-term) in mouse thymus tissue lysates (35 ug/lane). CHC1L (arrow) was detected using the purified Pab.