

Product datasheet for **AP17209PU-N**

Cofilin 1 (CFL1) (N-term) Rabbit Polyclonal Antibody

Product data:

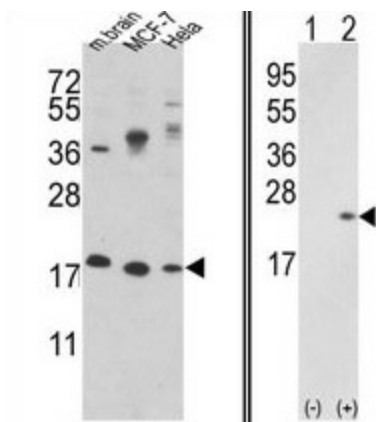
Product Type:	Primary Antibodies
Applications:	WB
Recommended Dilution:	Western blot: 1:50 - 1:100. ELISA: 1:1,000.
Reactivity:	Human, Mouse
Host:	Rabbit
Clonality:	Polyclonal
Immunogen:	KLH conjugated synthetic peptide selected from the N-terminal region of human CFL1
Specificity:	This antibody detects CFL1 at N-term.
Formulation:	PBS with 0.09% (W/V) sodium azide State: Liquid Ig fraction
Concentration:	lot specific
Purification:	Purified through a protein G column, eluted with high and low pH buffers and neutralized immediately, followed by dialysis against PBS
Conjugation:	Unconjugated
Storage:	Store the antibody at 2 - 8 °C up to one month or (in aliquots) at -20 °C for longer. Avoid repeated freezing and thawing.
Stability:	Shelf life: one year from despatch.
Gene Name:	cofilin 1
Database Link:	Entrez Gene 12631 Mouse Entrez Gene 1072 Human P23528
Background:	Cofilin is a widely distributed intracellular actin-modulating protein that binds and depolymerizes filamentous F-actin and inhibits the polymerization of monomeric G-actin in a pH-dependent manner.
Synonyms:	CFL1, CFL, p18
Note:	Molecular weight: 18502 Da
Protein Families:	Druggable Genome



[View online »](#)

Protein Pathways: Axon guidance, Fc gamma R-mediated phagocytosis, Regulation of actin cytoskeleton

Product images:



Western blot analysis of CFL1 Antibody (N-term) in MCF-7, Hela cell line and mouse brain tissue lysates (35 ug/lane). CFL1 (arrow) was detected using the purified Pab (2 ug/ml).