

## Product datasheet for **AP17208PU-N**

### CFHL1 (CFHR1) (C-term) Rabbit Polyclonal Antibody

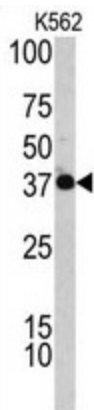
#### Product data:

Product Type:	Primary Antibodies
Applications:	WB
Recommended Dilution:	Western blot: 1:50 - 1:100. ELISA: 1:1,000.
Reactivity:	Human
Host:	Rabbit
Clonality:	Polyclonal
Immunogen:	KLH conjugated synthetic peptide selected from the C-terminal region of human CFHL1
Specificity:	This antibody detects CFHL1 at C-term.
Formulation:	PBS with 0.09% (W/V) sodium azide State: Liquid Ig fraction
Concentration:	lot specific
Purification:	Prepared by Saturated Ammonium Sulfate (SAS) precipitation followed by dialysis against PBS
Conjugation:	Unconjugated
Storage:	Store the antibody at 2 - 8 °C up to one month or (in aliquots) at -20 °C for longer. Avoid repeated freezing and thawing.
Stability:	Shelf life: one year from despatch.
Gene Name:	complement factor H related 1
Database Link:	<a href="#">Entrez Gene 3078 Human Q03591</a>
Background:	CFHL1 might be involved in complement regulation. The protein can associate with lipoproteins and may play a role in lipid metabolism.
Synonyms:	FHR-1, H36, H factor-like protein 1, CFHL, CFHL1, CFHL1P, CFHR1P, FHR1, HFL1, HFL2
Note:	Molecular weight: 37651 Da
Protein Families:	Secreted Protein



[View online »](#)

## Product images:



Western blot analysis of CFHL1 antibody (C-term) in K562 cell line lysates (35 ug/lane). CFHL1 (arrow) was detected using the purified Pab.