

Product datasheet for **AP17206PU-N**

CER1 (N-term) Rabbit Polyclonal Antibody

Product data:

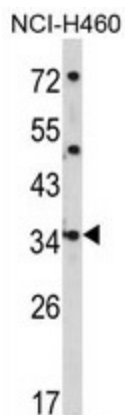
Product Type:	Primary Antibodies
Applications:	WB
Recommended Dilution:	Western blot: 1:50 - 1:100. ELISA: 1:1,000.
Reactivity:	Human
Host:	Rabbit
Clonality:	Polyclonal
Immunogen:	KLH conjugated synthetic peptide selected from the N-terminal region of human CER1
Specificity:	This antibody detects CER1 at N-term.
Formulation:	PBS with 0.09% (W/V) sodium azide State: Liquid Ig fraction
Concentration:	lot specific
Purification:	Prepared by Saturated Ammonium Sulfate (SAS) precipitation followed by dialysis against PBS
Conjugation:	Unconjugated
Storage:	Store the antibody at 2 - 8 °C up to one month or (in aliquots) at -20 °C for longer. Avoid repeated freezing and thawing.
Stability:	Shelf life: one year from despatch.
Gene Name:	Homo sapiens cerberus 1, DAN family BMP antagonist (CER1)
Database Link:	Entrez Gene 9350 Human O95813
Background:	CER1 is a cytokine member of the cysteine knot superfamily, characterized by nine conserved cysteines and a cysteine knot region. The cerberus-related cytokines, together with Dan and DRM/Gremlin, represent a group of bone morphogenetic protein (BMP) antagonists that can bind directly to BMPs and inhibit their activity.
Synonyms:	CER1, DAND4
Note:	Molecular weight: 30084 Da
Protein Families:	Secreted Protein



[View online »](#)

Protein Pathways: Wnt signaling pathway

Product images:



Western blot analysis of CER1 Antibody (N-term) in NCI-H460 cell line lysates (35 ug/lane). CER1 (arrow) was detected using the purified Pab.