

Product datasheet for **AP17204PU-N**

CEACAM5 (Center) Rabbit Polyclonal Antibody

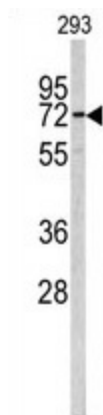
Product data:

| | |
|-----------------------|---|
| Product Type: | Primary Antibodies |
| Applications: | WB |
| Recommended Dilution: | Western blot: 1:50 - 1:100. ELISA: 1:1,000. |
| Reactivity: | Human |
| Host: | Rabbit |
| Clonality: | Polyclonal |
| Immunogen: | KLH conjugated synthetic peptide selected from the Center region of human CEA |
| Specificity: | This antibody detects CD66e / CEACAM5 at Center. |
| Formulation: | PBS with 0.09% (W/V) sodium azide State: Liquid Ig fraction |
| Concentration: | lot specific |
| Purification: | Prepared by Saturated Ammonium Sulfate (SAS) precipitation followed by dialysis against PBS |
| Conjugation: | Unconjugated |
| Storage: | Store the antibody at 2 - 8 °C up to one month or (in aliquots) at -20 °C for longer. Avoid repeated freezing and thawing. |
| Stability: | Shelf life: one year from despatch. |
| Gene Name: | carcinoembryonic antigen related cell adhesion molecule 5 |
| Database Link: | Entrez Gene 1048 Human P06731 |
| Background: | CEA is a cell surface glycoprotein that plays a role in cell adhesion and in intracellular signaling. It is a receptor for E. coli Dr adhesins. |
| Synonyms: | CEA, Carcinoembryonic antigen |
| Note: | Molecular weight: 76796 Da |



[View online »](#)

Product images:



Western blot analysis of CEA antibody (Center) in 293 cell line lysates (35 ug/lane). CEA (arrow) was detected using the purified Pab.