

Product datasheet for **AP17203PU-N**

PROCR Rabbit Polyclonal Antibody

Product data:

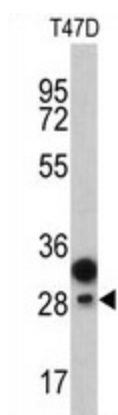
| | |
|-----------------------|--|
| Product Type: | Primary Antibodies |
| Applications: | WB |
| Recommended Dilution: | Western blot: 1:50 - 1:100. ELISA: 1:1,000. |
| Reactivity: | Human |
| Host: | Rabbit |
| Clonality: | Polyclonal |
| Immunogen: | KLH conjugated synthetic peptide selected from the Center region of human CD201 |
| Specificity: | This antibody detects CD201 at Center. |
| Formulation: | PBS with 0.09% (W/V) sodium azide State: Liquid Ig fraction |
| Concentration: | lot specific |
| Purification: | Prepared by Saturated Ammonium Sulfate (SAS) precipitation followed by dialysis against PBS |
| Conjugation: | Unconjugated |
| Storage: | Store the antibody at 2 - 8 °C up to one month or (in aliquots) at -20 °C for longer. Avoid repeated freezing and thawing. |
| Stability: | Shelf life: one year from despatch. |
| Gene Name: | protein C receptor |
| Database Link: | Entrez Gene 10544 Human Q9UNN8 |
| Background: | PROCR (CD201) is a receptor for activated protein C, a serine protease activated by and involved in the blood coagulation pathway. The protein is an N-glycosylated type I membrane protein that enhances the activation of protein C. Mutations in its gene have been associated with venous thromboembolism and myocardial infarction, as well as with late fetal loss during pregnancy. |
| Synonyms: | PROCR, Endothelial protein C receptor, APC receptor |
| Note: | Molecular weight: 26671 Da |



[View online »](#)

Protein Families: Druggable Genome, ES Cell Differentiation/IPS, Transmembrane

Product images:



Western blot analysis of CD201 antibody (Center) in T47D cell line lysates (35 ug/lane). CD201 (arrow) was detected using the purified Pab.