

Product datasheet for **AP17199PU-N**

CCT3 (C-term) Rabbit Polyclonal Antibody

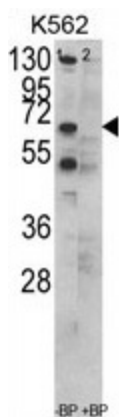
Product data:

Product Type:	Primary Antibodies
Applications:	WB
Recommended Dilution:	Western blot: 1:100 - 1:500. ELISA: 1:1,000.
Reactivity:	Human
Host:	Rabbit
Clonality:	Polyclonal
Immunogen:	KLH conjugated synthetic peptide selected from the C-terminal region of human CCT3
Specificity:	This antibody detects CCT3 / TCP1 gamma at C-term.
Formulation:	PBS with 0.09% (W/V) sodium azide State: Aff - Purified State: Liquid Ig fraction
Concentration:	lot specific
Purification:	Purified through a protein A column, followed by peptide affinity purification
Conjugation:	Unconjugated
Storage:	Store the antibody at 2 - 8 °C up to one month or (in aliquots) at -20 °C for longer. Avoid repeated freezing and thawing.
Stability:	Shelf life: one year from despatch.
Gene Name:	chaperonin containing TCP1 subunit 3
Database Link:	Entrez Gene 7203 Human P49368
Background:	CCT3 is a molecular chaperone that is member of the chaperonin containing TCP1 complex (CCT), also known as the TCP1 ring complex (TRiC). This complex consists of two identical stacked rings, each containing eight different proteins. Unfolded polypeptides enter the central cavity of the complex and are folded in an ATP-dependent manner. The complex folds various proteins, including actin and tubulin.
Synonyms:	CCTG, CCT gamma, TRiC5
Note:	Molecular weight: 60534 Da



[View online »](#)

Product images:



Western blot analysis of CCT3 Antibody (C-term) in K562 cell line lysates (35 ug/lane). CCT3 (arrow) was detected using the purified Pab.