

Product datasheet for **AP17198PU-N**

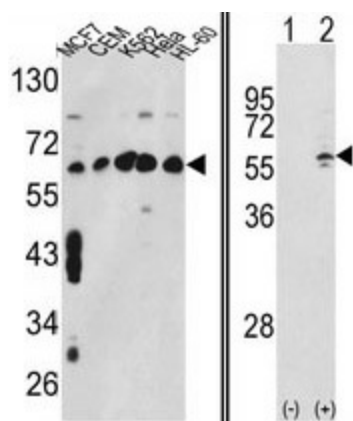
CCT3 Rabbit Polyclonal Antibody

Product data:

Product Type:	Primary Antibodies
Applications:	WB
Recommended Dilution:	Western blot: 1:50 - 1:100. ELISA: 1:1,000.
Reactivity:	Human
Host:	Rabbit
Clonality:	Polyclonal
Immunogen:	KLH conjugated synthetic peptide selected from the Center region of human CCT3
Specificity:	This antibody detects CCT3 / TCP1 gamma at Center.
Formulation:	PBS with 0.09% (W/V) sodium azide State: Purified State: Liquid Ig fraction
Concentration:	lot specific
Purification:	Prepared by Saturated Ammonium Sulfate (SAS) precipitation followed by dialysis against PBS
Conjugation:	Unconjugated
Storage:	Store the antibody at 2 - 8 °C up to one month or (in aliquots) at -20 °C for longer. Avoid repeated freezing and thawing.
Stability:	Shelf life: one year from despatch.
Gene Name:	chaperonin containing TCP1 subunit 3
Database Link:	Entrez Gene 7203 Human P49368
Background:	CCT3 is a molecular chaperone that is member of the chaperonin containing TCP1 complex (CCT), also known as the TCP1 ring complex (TRiC). This complex consists of two identical stacked rings, each containing eight different proteins. Unfolded polypeptides enter the central cavity of the complex and are folded in an ATP-dependent manner. The complex folds various proteins, including actin and tubulin.
Synonyms:	CCTG, CCT gamma, TRiC5
Note:	Molecular weight: 60534 Da



[View online »](#)

Product images:


(LEFT) Western blot analysis of CCT3 Antibody (Center) in MCF7, CEM, K562, HL-60, HeLa cell line lysates (35ug/lane). CCT3 (arrow) was detected using the purified Pab. (RIGHT) Western blot analysis of CCT3 (arrow) using rabbit polyclonal CCT3 Antibody (Center). 293 cell lysates (2 ug/lane) either nontransfected (Lane 1) or transiently transfected with the CCT3 gene (Lane 2).