

Product datasheet for **AP17195PU-N**

Nocturnin (NOCT) (C-term) Rabbit Polyclonal Antibody

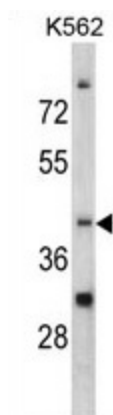
Product data:

Product Type:	Primary Antibodies
Applications:	WB
Recommended Dilution:	Western blot: 1:50 - 1:100. ELISA: 1:1,000.
Reactivity:	Human
Host:	Rabbit
Clonality:	Polyclonal
Immunogen:	KLH conjugated synthetic peptide selected from the C-terminal region of human CCRN4L
Specificity:	This antibody detects Nocturnin at C-term.
Formulation:	PBS with 0.09% (W/V) sodium azide State: Liquid Ig fraction
Concentration:	lot specific
Purification:	Prepared by Saturated Ammonium Sulfate (SAS) precipitation followed by dialysis against PBS
Conjugation:	Unconjugated
Storage:	Store the antibody at 2 - 8 °C up to one month or (in aliquots) at -20 °C for longer. Avoid repeated freezing and thawing.
Stability:	Shelf life: one year from despatch.
Gene Name:	nocturnin
Database Link:	Entrez Gene 25819 Human Q9UK39
Background:	CCRN4L is highly similar to Nocturnin, identified as a circadian clock regulated gene in <i>Xenopus laevis</i> . This protein and Nocturnin protein share similarity with the C-terminal domain of a yeast transcription factor, carbon catabolite repression 4 (CCR4).
Synonyms:	CCRN4L, CCR4, NOC, CCR4 protein homolog
Note:	Molecular weight: 48196 Da



[View online »](#)

Product images:



Western blot analysis of CCRN4L antibody (C-term) in K562 cell line lysates (35 ug/lane). CCRN4L (arrow) was detected using the purified Pab.