

Product datasheet for **AP17189PU-N**

CBSL Rabbit Polyclonal Antibody

Product data:

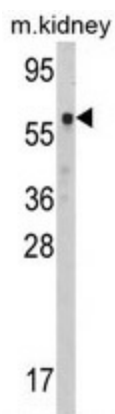
Product Type:	Primary Antibodies
Applications:	WB
Recommended Dilution:	Western blot: 1:100 - 1:500. ELISA: 1:1,000.
Reactivity:	Human, Mouse
Host:	Rabbit
Clonality:	Polyclonal
Immunogen:	KLH conjugated synthetic peptide selected from the Center region of human CBS
Specificity:	This antibody detects CBS at Center.
Formulation:	PBS with 0.09% (W/V) sodium azide State: Liquid Ig fraction
Concentration:	lot specific
Purification:	Purified through a protein A column, followed by peptide affinity purification
Conjugation:	Unconjugated
Storage:	Store the antibody at 2 - 8 °C up to one month or (in aliquots) at -20 °C for longer. Avoid repeated freezing and thawing.
Stability:	Shelf life: one year from despatch.
Gene Name:	cystathionine beta-synthase like
Database Link:	Entrez Gene 12411 Mouse Entrez Gene 102724560 Human P0DN79
Background:	CBS acts as a homotetramer to catalyze the conversion of homocysteine to cystathionine, the first step in the transsulfuration pathway. This protein is allosterically activated by adenosyl-methionine and uses pyridoxal phosphate as a cofactor. Defects in this gene can cause cystathionine beta-synthase deficiency (CBSD), which can lead to homocystinuria.
Synonyms:	Cystathionine beta-synthase, Serine sulfhydrase, Beta-thionase
Note:	Molecular weight: 60587 Da
Protein Families:	Druggable Genome



[View online »](#)

Protein Pathways:

Cysteine and methionine metabolism, Glycine, serine and threonine metabolism, Metabolic pathways, Selenoamino acid metabolism

Product images:

Western blot analysis of CBS Antibody (Center) in mouse kidney tissue lysates (35 ug/lane). CBS (arrow) was detected using the purified Pab.