

Product datasheet for **AP17187PU-N**

Caveolin 3 (CAV3) (N-term) Rabbit Polyclonal Antibody

Product data:

Product Type:	Primary Antibodies
Applications:	WB
Recommended Dilution:	Western blot: 1:50 - 1:100. ELISA: 1:1,000.
Reactivity:	Human
Host:	Rabbit
Clonality:	Polyclonal
Immunogen:	KLH conjugated synthetic peptide selected from the N-terminal region of human CAV3
Specificity:	This antibody detects Caveolin-3 at N-term.
Formulation:	PBS with 0.09% (W/V) sodium azide State: Liquid Ig fraction
Concentration:	lot specific
Purification:	Prepared by Saturated Ammonium Sulfate (SAS) precipitation followed by dialysis against PBS
Conjugation:	Unconjugated
Storage:	Store the antibody at 2 - 8 °C up to one month or (in aliquots) at -20 °C for longer. Avoid repeated freezing and thawing.
Stability:	Shelf life: one year from despatch.
Gene Name:	caveolin 3
Database Link:	Entrez Gene 859 Human P56539
Background:	CAV3 is a caveolin family member, which functions as a component of the caveolae plasma membranes found in most cell types. Caveolin proteins are proposed to be scaffolding proteins for organizing and concentrating certain caveolin-interacting molecules. Mutations identified in its gene lead to interference with protein oligomerization or intra-cellular routing, disrupting caveolae formation and resulting in Limb-Girdle muscular dystrophy type-1C (LGMD-1C), hyperCKemia or rippling muscle disease (RMD).
Synonyms:	CAV3, Caveolin 3
Note:	Molecular weight: 17259 Da

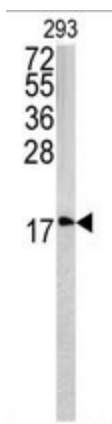


[View online »](#)

Protein Families: Druggable Genome, Transmembrane

Protein Pathways: Focal adhesion

Product images:



Western blot analysis of CAV3 antibody (N-term) in 293 cell line lysates (35 ug/lane). CAV3 (arrow) was detected using the purified Pab.