

Product datasheet for **AP17179PU-N**

Casein (CSN1S1) Rabbit Polyclonal Antibody

Product data:

Product Type:	Primary Antibodies
Applications:	WB
Recommended Dilution:	Western blot: 1:50 - 1:100. ELISA: 1:1,000.
Reactivity:	Human
Host:	Rabbit
Clonality:	Polyclonal
Immunogen:	KLH conjugated synthetic peptide selected from the Center region of human CASA
Specificity:	This antibody detects CASA at Center.
Formulation:	PBS with 0.09% (W/V) sodium azide State: Liquid Ig fraction
Concentration:	lot specific
Purification:	Prepared by Saturated Ammonium Sulfate (SAS) precipitation followed by dialysis against PBS
Conjugation:	Unconjugated
Storage:	Store the antibody at 2 - 8 °C up to one month or (in aliquots) at -20 °C for longer. Avoid repeated freezing and thawing.
Stability:	Shelf life: one year from despatch.
Gene Name:	casein alpha s1
Database Link:	Entrez Gene 1446 Human P47710



[View online »](#)

Background:

Casein is the predominant phosphoprotein found in fresh milk, as a salt of calcium. Casein is not coagulated by heat. It is precipitated by acids and by rennet, a proteolytic enzyme typically obtained from the stomachs of calves. The enzyme trypsin can hydrolyze off a phosphate-containing peptone. Casein consists of a fairly high number of proline peptides, which do not interact. There are also no disulphide bridges. As a result, it has relatively little secondary structure or tertiary structure. Because of this, it cannot denature. It is relatively hydrophobic, making it poorly soluble in water. It is found in milk as a suspension of particles called casein micelles which show some resemblance with surfactant-type micellae in a sense that the hydrophilic parts reside at the surface. The caseins in the micelles are held together by calcium ions and hydrophobic interactions.

Synonyms:

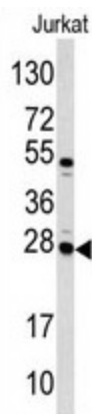
CSN1S1, CASA, CSN1, Casoxin-D

Note:

Molecular weight: 21671 Da

Protein Families:

Secreted Protein

Product images:

Western blot analysis of CASA antibody (Center) in Jurkat cell line lysates (35 ug/lane). CASA (arrow) was detected using the purified Pab.