

## Product datasheet for **AP17178PU-N**

### CAPZB (N-term) Rabbit Polyclonal Antibody

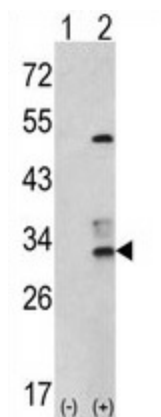
#### Product data:

|                       |   |
|-----------------------|---|
| Product Type:         | Primary Antibodies  |
| Applications:         | WB  |
| Recommended Dilution: | Western blot: 1:100 - 1:500.<br>ELISA: 1:1,000.   |
| Reactivity:           | Human   |
| Host:                 | Rabbit  |
| Clonality:            | Polyclonal  |
| Immunogen:            | KLH conjugated synthetic peptide selected from the N-terminal region of human CAPZB   |
| Specificity:          | This antibody detects CAPZB at N-term.  |
| Formulation:          | PBS with 0.09% (W/V) sodium azide<br>State: Liquid Ig fraction  |
| Concentration:        | lot specific  |
| Purification:         | Purified through a protein A column, followed by peptide affinity purification  |
| Conjugation:          | Unconjugated  |
| Storage:              | Store the antibody at 2 - 8 °C up to one month or (in aliquots) at -20 °C for longer. Avoid repeated freezing and thawing.  |
| Stability:            | Shelf life: one year from despatch.   |
| Gene Name:            | capping actin protein of muscle Z-line beta subunit   |
| Database Link:        | <a href="#">Entrez Gene 832 Human P47756</a>  |
| Background:           | CAPZB is a member of the F-actin capping protein family. This protein is the beta subunit of the barbed-end actin binding protein. The protein regulates growth of the actin filament by capping the barbed end of growing actin filaments. |
| Synonyms:             | CapZ beta, CAPZ-B   |
| Note:                 | Molecular weight: 31350 Da  |



[View online »](#)

## Product images:



Western blot analysis of CAPZB (arrow) using rabbit polyclonal CAPZB Antibody (N-term). 293 cell lysates (2 ug/lane) either nontransfected (Lane 1) or transiently transfected with the CAPZB gene (Lane 2).