

Product datasheet for **AP17177PU-N**

CAPZB (C-term) Rabbit Polyclonal Antibody

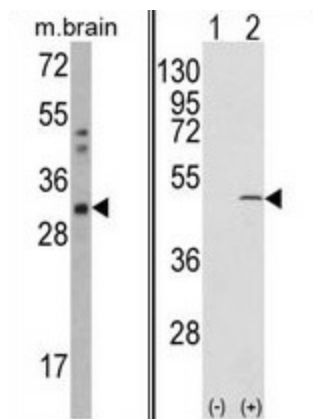
Product data:

Product Type:	Primary Antibodies
Applications:	WB
Recommended Dilution:	Western blot: 1:50 - 1:100. ELISA: 1:1,000.
Reactivity:	Human
Host:	Rabbit
Clonality:	Polyclonal
Immunogen:	KLH conjugated synthetic peptide selected from the C-terminal region of human CAPZB
Specificity:	This antibody detects CAPZB at C-term.
Formulation:	PBS with 0.09% (W/V) sodium azide State: Liquid Ig fraction
Concentration:	lot specific
Purification:	Prepared by Saturated Ammonium Sulfate (SAS) precipitation followed by dialysis against PBS
Conjugation:	Unconjugated
Storage:	Store the antibody at 2 - 8 °C up to one month or (in aliquots) at -20 °C for longer. Avoid repeated freezing and thawing.
Stability:	Shelf life: one year from despatch.
Gene Name:	capping actin protein of muscle Z-line beta subunit
Database Link:	Entrez Gene 832 Human P47756
Background:	CAPZB is a member of the F-actin capping protein family. This protein is the beta subunit of the barbed-end actin binding protein. The protein regulates growth of the actin filament by capping the barbed end of growing actin filaments.
Synonyms:	CapZ beta, CAPZ-B
Note:	Molecular weight: 31350 Da



[View online »](#)

Product images:



(LEFT) Western blot analysis of Crified Pab.
(RIGHT) Western blot analysis of CAPZB (arrow) using rabbit polyclonal CAPZB Antibody (C-term). 293 cell lysates (2 ug/lane) either nontransfected (Lane 1) or transiently transfected with the CAPZB gene (Lane 2).