

Product datasheet for **AP17173PU-N**

CAMK1D (N-term) Rabbit Polyclonal Antibody

Product data:

Product Type:	Primary Antibodies
Applications:	WB
Recommended Dilution:	Western blot: 1:50 - 1:100. ELISA: 1:1,000.
Reactivity:	Human
Host:	Rabbit
Clonality:	Polyclonal
Immunogen:	KLH conjugated synthetic peptide selected from the N-terminal region of human CAMK1D
Specificity:	This antibody detects CAMK1D at N-term.
Formulation:	PBS with 0.09% (W/V) sodium azide State: Liquid Ig fraction
Concentration:	lot specific
Purification:	Prepared by Saturated Ammonium Sulfate (SAS) precipitation followed by dialysis against PBS
Conjugation:	Unconjugated
Storage:	Store the antibody at 2 - 8 °C up to one month or (in aliquots) at -20 °C for longer. Avoid repeated freezing and thawing.
Stability:	Shelf life: one year from despatch.
Gene Name:	calcium/calmodulin dependent protein kinase ID
Database Link:	Entrez Gene 57118 Human Q8IU85
Background:	CAMK1-like protein kinase belongs to a proposed calcium-triggered signaling cascade. This protein is expressed in polymorphonuclear leukocytes (PMNs) and may be part of the chemokine signal transduction pathway that regulates granulocyte function. CAMK1-like protein kinase may play a role in apoptosis of erythroleukemia cells. It activates MAP kinase MAPK3, and in vitro, phosphorylates transcription factor CREM isoform Beta and probably CREB1.
Synonyms:	CaM kinase I delta, Camk1D, CamKI-like protein kinase, CKLiK, CaM kinase ID, CaMKI-delta, CaM kinase ID

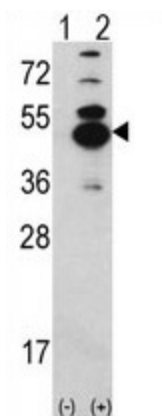


[View online »](#)

Note: Molecular weight: 42,914 Da. Multiple isoforms

Protein Families: Druggable Genome, Protein Kinase

Product images:



Western blot analysis of CAMK1D (arrow) using rabbit polyclonal CAMK1D Antibody (N-term), 293 cell lysates (2 ug/lane) either nontransfected (Lane 1) or transiently transfected with the CAMK1D gene (Lane 2).