

Product datasheet for **AP17164PU-N**

Caldesmon (CALD1) Rabbit Polyclonal Antibody

Product data:

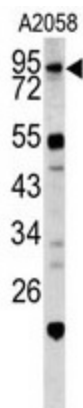
Product Type:	Primary Antibodies
Applications:	WB
Recommended Dilution:	Western blot: 1:50 - 1:100. ELISA: 1:1,000.
Reactivity:	Human
Host:	Rabbit
Clonality:	Polyclonal
Immunogen:	KLH conjugated synthetic peptide selected from the Center region of human CALD1
Specificity:	This antibody detects Caldesmon at Center.
Formulation:	PBS with 0.09% (W/V) sodium azide State: Liquid Ig fraction
Concentration:	lot specific
Purification:	Prepared by Saturated Ammonium Sulfate (SAS) precipitation followed by dialysis against PBS
Conjugation:	Unconjugated
Storage:	Store the antibody at 2 - 8 °C up to one month or (in aliquots) at -20 °C for longer. Avoid repeated freezing and thawing.
Stability:	Shelf life: one year from despatch.
Gene Name:	caldesmon 1
Database Link:	Entrez Gene 800 Human Q05682
Background:	CALD1 is a calmodulin- and actin-binding protein that plays an essential role in the regulation of smooth muscle and nonmuscle contraction. The conserved domain of this protein possesses the binding activities to Ca(2+)-calmodulin, actin, tropomyosin, myosin, and phospholipids. This protein is a potent inhibitor of the actin-tropomyosin activated myosin MgATPase, and serves as a mediating factor for Ca(2+)-dependent inhibition of smooth muscle contraction.
Synonyms:	CALD1, CAD, CDM
Note:	Molecular weight: 93250 Da



[View online »](#)

Protein Pathways: Vascular smooth muscle contraction

Product images:



Western blot analysis of CALD1 antibody (Center) in A2058 cell line lysates (35 ug/lane). CALD1 (arrow) was detected using the purified Pab.