

Product datasheet for **AP17163PU-N**

CACNG5 (C-term) Rabbit Polyclonal Antibody

Product data:

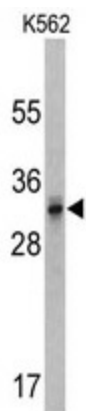
Product Type:	Primary Antibodies
Applications:	WB
Recommended Dilution:	Western blot: 1:50 - 1:100. ELISA: 1:1,000.
Reactivity:	Human
Host:	Rabbit
Clonality:	Polyclonal
Immunogen:	KLH conjugated synthetic peptide selected from the C-terminal region of human CACNG5
Specificity:	This antibody detects CACNG5 at C-term.
Formulation:	PBS with 0.09% (W/V) sodium azide State: Liquid Ig fraction
Concentration:	lot specific
Purification:	Prepared by Saturated Ammonium Sulfate (SAS) precipitation followed by dialysis against PBS
Conjugation:	Unconjugated
Storage:	Store the antibody at 2 - 8 °C up to one month or (in aliquots) at -20 °C for longer. Avoid repeated freezing and thawing.
Stability:	Shelf life: one year from despatch.
Gene Name:	calcium voltage-gated channel auxiliary subunit gamma 5
Database Link:	Entrez Gene 27091 Human Q9UF02
Background:	L-type calcium channels are composed of five subunits. The protein CACNG5 represents one of these subunits, gamma, and is one of several gamma subunit proteins. It is an integral membrane protein that is thought to stabilize the calcium channel in an inactive (closed) state.
Synonyms:	MGC126656; MGC126682
Note:	Molecular weight: 30903 Da
Protein Families:	Druggable Genome, Transmembrane



[View online »](#)

Protein Pathways:

Arrhythmogenic right ventricular cardiomyopathy (ARVC), Cardiac muscle contraction, Dilated cardiomyopathy, Hypertrophic cardiomyopathy (HCM), MAPK signaling pathway

Product images:

Western blot analysis of CACNG5 antibody (C-term) in K562 cell line lysates (35 ug/lane). CACNG5 (arrow) was detected using the purified Pab.