

Product datasheet for **AP17160PU-N**

Complement Component 6 (C6) (N-term) Rabbit Polyclonal Antibody

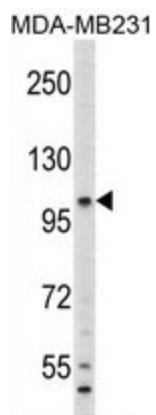
Product data:

Product Type:	Primary Antibodies
Applications:	WB
Recommended Dilution:	Western blot: 1:100 - 1:500. ELISA: 1:1,000.
Reactivity:	Human
Host:	Rabbit
Clonality:	Polyclonal
Immunogen:	KLH conjugated synthetic peptide selected from the N-terminal region of human C6
Specificity:	This antibody detects Complement C6 at N-term.
Formulation:	PBS with 0.09% (W/V) sodium azide State: Liquid Ig fraction
Concentration:	lot specific
Purification:	Purified through a protein A column, followed by peptide affinity purification
Conjugation:	Unconjugated
Storage:	Store the antibody at 2 - 8 °C up to one month or (in aliquots) at -20 °C for longer. Avoid repeated freezing and thawing.
Stability:	Shelf life: one year from despatch.
Gene Name:	complement component 6
Database Link:	Entrez Gene 729 Human P13671
Background:	C6 is a component of complement cascade. It is part of the membrane attack complex which can insert into the cell membrane and cause cell to lyse. People with C6 deficiency are prone to bacterial infection.
Synonyms:	C6
Note:	Molecular weight: 104786 Da
Protein Families:	Druggable Genome, Secreted Protein
Protein Pathways:	Complement and coagulation cascades, Prion diseases, Systemic lupus erythematosus



[View online »](#)

Product images:



Western blot analysis of C6 Antibody (N-term) in MDA-MB231 cell line lysates (35 ug/lane). C6 (arrow) was detected using the purified Pab.