

Product datasheet for **AP17159PU-N**

CTRP1 (C1QTNF1) (N-term) Rabbit Polyclonal Antibody

Product data:

Product Type:	Primary Antibodies
Applications:	WB
Recommended Dilution:	Western blot: 1:50 - 1:100. ELISA: 1:1,000.
Reactivity:	Human
Host:	Rabbit
Clonality:	Polyclonal
Immunogen:	KLH conjugated synthetic peptide selected from the N-terminal region of human C1QTNF1
Specificity:	This antibody detects C1QTNF1 at N-term.
Formulation:	PBS with 0.09% (W/V) sodium azide State: Liquid Ig fraction
Concentration:	lot specific
Purification:	Prepared by Saturated Ammonium Sulfate (SAS) precipitation followed by dialysis against PBS
Conjugation:	Unconjugated
Storage:	Store the antibody at 2 - 8 °C up to one month or (in aliquots) at -20 °C for longer. Avoid repeated freezing and thawing.
Stability:	Shelf life: one year from despatch.
Gene Name:	C1q and tumor necrosis factor related protein 1
Database Link:	Entrez Gene 114897 Human Q9BXJ1

[View online »](#)

Background:

CTRPs (C1q/tumor necrosis factor- α -related proteins) are a widely expressed and highly conserved family of adiponectin paralogs. CTRP1 consists of an N-terminal signal peptide sequence followed by a variable region, a collagen repeat domain, and a C-terminal globular domain.

Unlike adiponectin, which is expressed exclusively by differentiated adipocytes, the CTRPs are expressed in a wide variety of tissues. These proteins are thought to act mainly on liver and muscle tissue to control glucose and lipid metabolism. An analysis of the crystal structure of adiponectin revealed a structural and evolutionary link between TNF and CTRPs, suggesting that these proteins arose from a common ancestral innate immunity gene. CTRP1 expression may be associated with a low-grade chronic inflammation status in adipose tissues.

Synonyms:

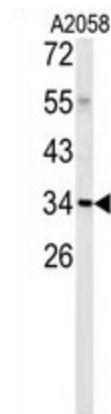
CTRP1, GIP

Note:

Molecular weight: 31743 Da

Protein Families:

Druggable Genome, Secreted Protein, Transmembrane

Product images:


Western blot analysis of C1QTNF1 antibody (N-term) in A2058 cell line lysates (35 ug/lane). C1QTNF1 (arrow) was detected using the purified Pab.