

Product datasheet for **AP17153PU-N**

BLNK (Center) Rabbit Polyclonal Antibody

Product data:

Product Type:	Primary Antibodies
Applications:	WB
Recommended Dilution:	ELISA:1/1,000. Western Blot: 1/100~1/500.
Reactivity:	Human
Host:	Rabbit
Clonality:	Polyclonal
Immunogen:	This BLNK antibody is generated from rabbits immunized with a KLH conjugated synthetic peptide selected from the Center region of human BLNK.
Specificity:	BLNK antibody recognizes BLNK at Center.
Formulation:	PBS with 0.09% (W/V) Sodium Azide as preservative State: Liquid purified Ig fraction.
Concentration:	lot specific
Purification:	Protein A column followed by Peptide Affinity Purification.
Conjugation:	Unconjugated
Storage:	Store the antibody undiluted at 2-8°C for one month or (in aliquots) at -20°C for longer. Avoid repeated freezing and thawing.
Stability:	Shelf life: one year from despatch.
Gene Name:	B-cell linker
Database Link:	Entrez Gene 29760 Human Q8WW28



[View online »](#)

Background:

BLNK (B cell linker protein) is an adaptor molecule that plays key role in B cell activation initiated by cross-linking the B cell receptor (BCR). This activation leads to an increase in the tyrosine phosphorylation of a number of proteins due to activation of nonreceptor protein tyrosine kinases (PTK) including Syk, which is responsible for the tyrosine phosphorylation of BLNK. BLNK is cytosolic protein identified as two phosphoproteins migrating at 68 and 70 kDa in SDS/PAGE (alternatively spliced forms of human BLNK). Mapping of the tyrosine residues in BLNK reveal three tyrosines that bind PLC-gamma2, and two tyrosines that bind the Tec family kinase Btk, the Vav nucleotide exchange factor and the adaptor Nck.

Synonyms:

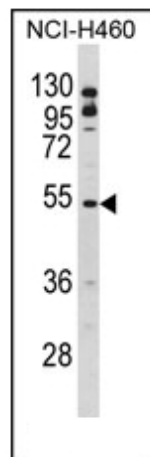
BASH, SLP65, SLP-65

Protein Families:

Druggable Genome

Protein Pathways:

B cell receptor signaling pathway, Primary immunodeficiency

Product images:

Western blot analysis of BLNK Antibody (Center) in NCI-H460 cell line lysates (35ug/lane). BLNK (arrow) was detected using the purified Pab.