

Product datasheet for **AP17147PU-N**

BAG1 (C-term) Rabbit Polyclonal Antibody

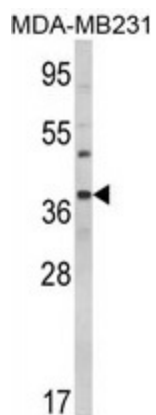
Product data:

Product Type:	Primary Antibodies
Applications:	WB
Recommended Dilution:	Western blot: 1:50 - 1:100. ELISA: 1:1,000.
Reactivity:	Human
Host:	Rabbit
Clonality:	Polyclonal
Immunogen:	KLH conjugated synthetic peptide selected from the C-terminal region of human BAG1
Specificity:	This antibody detects BAG1 at C-term.
Formulation:	PBS with 0.97% (W/V) sodium azide State: Liquid Ig fraction
Concentration:	lot specific
Purification:	Prepared by Saturated Ammonium Sulfate (SAS) precipitation followed by dialysis against PBS
Conjugation:	Unconjugated
Storage:	Store the antibody at 2 - 8 °C up to one month or (in aliquots) at -20 °C for longer. Avoid repeated freezing and thawing.
Stability:	Shelf life: one year from despatch.
Gene Name:	BCL2 associated athanogene 1
Database Link:	Entrez Gene 573 Human Q99933
Background:	BAG1 binds to BCL2 and is referred to as BCL2-associated athanogene. It enhances the anti-apoptotic effects of BCL2 and represents a link between growth factor receptors and anti-apoptotic mechanisms.
Synonyms:	BAG-1, HAP, RAP46
Note:	Molecular weight: 38878 Da



[View online »](#)

Product images:



Western blot analysis of BAG1 Antibody (C-term) in MDA-MB231 cell line lysates (35 ug/lane). BAG1 (arrow) was detected using the purified Pab.