

## Product datasheet for **AP17145PU-N**

### BAALC (N-term) Rabbit Polyclonal Antibody

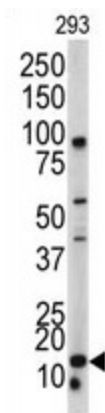
#### Product data:

Product Type:	Primary Antibodies
Applications:	WB
Recommended Dilution:	Western blot: 1:50 - 1:100. ELISA: 1:1,000.
Reactivity:	Human
Host:	Rabbit
Clonality:	Polyclonal
Immunogen:	KLH conjugated synthetic peptide selected from the N-terminal region of human BAALC
Specificity:	This antibody detects BAALC at N-term.
Formulation:	PBS with 0.09% (W/V) sodium azide State: Liquid Ig fraction
Concentration:	lot specific
Purification:	Prepared by Saturated Ammonium Sulfate (SAS) precipitation followed by dialysis against PBS
Conjugation:	Unconjugated
Storage:	Store the antibody at 2 - 8 °C up to one month or (in aliquots) at -20 °C for longer. Avoid repeated freezing and thawing.
Stability:	Shelf life: one year from despatch.
Gene Name:	brain and acute leukemia, cytoplasmic
Database Link:	<a href="#">Entrez Gene 79870 Human</a> <a href="#">Q8WXS3</a>
Background:	BAALC may play a synaptic role at the postsynaptic lipid rafts by interacting with CAMK2A.
Synonyms:	FLJ12015
Note:	Molecular weight: 19224 Da



[View online »](#)

## Product images:



Western blot analysis of BAALC antibody (N-term) in 293 cell line lysates (35 ug/lane). BAALC (arrow) was detected using the purified Pab.