

Product datasheet for **AP17139PU-N**

ASS1 (Center) Rabbit Polyclonal Antibody

Product data:

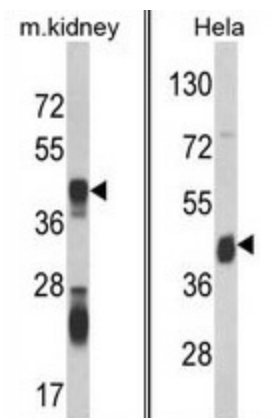
| | |
|-----------------------|---|
| Product Type: | Primary Antibodies |
| Applications: | WB |
| Recommended Dilution: | Western blot: 1:50 - 1:100. ELISA: 1:1,000. |
| Reactivity: | Human, Mouse |
| Host: | Rabbit |
| Clonality: | Polyclonal |
| Immunogen: | KLH conjugated synthetic peptide selected from the Center region of human ASS |
| Specificity: | This antibody detects ASS1 at Center. |
| Formulation: | PBS with 0.122% (W/V) sodium azide State: Liquid Ig fraction |
| Concentration: | lot specific |
| Purification: | Prepared by Saturated Ammonium Sulfate (SAS) precipitation followed by dialysis against PBS |
| Conjugation: | Unconjugated |
| Storage: | Store the antibody at 2 - 8 °C up to one month or (in aliquots) at -20 °C for longer. Avoid repeated freezing and thawing. |
| Stability: | Shelf life: one year from despatch. |
| Gene Name: | argininosuccinate synthase 1 |
| Database Link: | Entrez Gene 11898 Mouse Entrez Gene 445 Human P00966 |
| Background: | ASS catalyzes the penultimate step of the arginine biosynthetic pathway. There are approximately 10 to 14 copies of this gene including the pseudogenes scattered across the human genome, among which the one located on chromosome 9 appears to be the only functional gene for argininosuccinate synthetase. |
| Synonyms: | Argininosuccinate synthase |
| Note: | Molecular weight: 46530 Da |
| Protein Families: | Druggable Genome |



[View online »](#)

Protein Pathways: Alanine, aspartate and glutamate metabolism, Arginine and proline metabolism, Metabolic pathways

Product images:



(LEFT) Western blot analysis of ASS Antibody (Center) in mouse kidney tissue lysates (35 ug/lane). ASS (arrow) was detected using the purified Pab. (RIGHT) Western blot analysis of ASS Antibody (Center) in HeLa cell line lysates (35 ug/lane). ASS (arrow) was detected using the purified Pab.