

Product datasheet for **AP17132PU-N**

p21 ARC (ARPC3) (C-term) Rabbit Polyclonal Antibody

Product data:

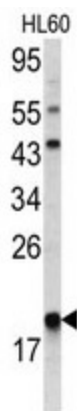
Product Type:	Primary Antibodies
Applications:	WB
Recommended Dilution:	Western blot: 1:50 - 1:100. ELISA: 1:1,000.
Reactivity:	Human
Host:	Rabbit
Clonality:	Polyclonal
Immunogen:	KLH conjugated synthetic peptide selected from the C-terminal region of human ARPC3
Specificity:	This antibody detects ARPC3 / ARC21 at C-term.
Formulation:	PBS with 0.09% (W/V) sodium azide State: Liquid Ig fraction
Concentration:	lot specific
Purification:	Prepared by Saturated Ammonium Sulfate (SAS) precipitation followed by dialysis against PBS
Conjugation:	Unconjugated
Storage:	Store the antibody at 2 - 8 °C up to one month or (in aliquots) at -20 °C for longer. Avoid repeated freezing and thawing.
Stability:	Shelf life: one year from despatch.
Gene Name:	actin related protein 2/3 complex subunit 3
Database Link:	Entrez Gene 10094 Human O15145
Background:	ARPC3 is one of seven subunits of the human Arp2/3 protein complex. The Arp2/3 protein complex has been implicated in the control of actin polymerization in cells and has been conserved through evolution. The exact role of the protein, the p21 subunit, has yet to be determined.
Synonyms:	p21-ARC
Note:	Molecular weight: 20547 Da



[View online »](#)

Protein Pathways: Fc gamma R-mediated phagocytosis, Pathogenic Escherichia coli infection, Regulation of actin cytoskeleton

Product images:



Western blot analysis of ARPC3 antibody (C-term) in HL60 cell line lysates (35 ug/lane). ARPC3 (arrow) was detected using the purified Pab