

Product datasheet for **AP17127PU-N**

RhoGDI (ARHGDI) (C-term) Rabbit Polyclonal Antibody

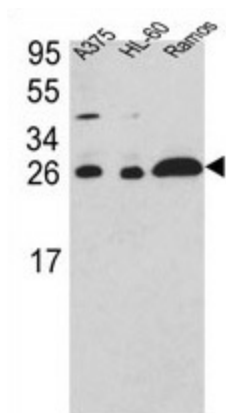
Product data:

Product Type:	Primary Antibodies
Applications:	WB
Recommended Dilution:	Western blot: 1:50 - 1:100. ELISA: 1:1,000.
Reactivity:	Human
Host:	Rabbit
Clonality:	Polyclonal
Immunogen:	KLH conjugated synthetic peptide selected from the C-terminal region of human ARHGDI
Specificity:	This antibody detects ARHGDI / GDIA1 at C-term.
Formulation:	PBS with 0.09% (W/V) sodium azide State: Liquid Ig fraction
Concentration:	lot specific
Purification:	Prepared by Saturated Ammonium Sulfate (SAS) precipitation followed by dialysis against PBS
Conjugation:	Unconjugated
Storage:	Store the antibody at 2 - 8 °C up to one month or (in aliquots) at -20 °C for longer. Avoid repeated freezing and thawing.
Stability:	Shelf life: one year from despatch.
Gene Name:	Rho GDP dissociation inhibitor alpha
Database Link:	Entrez Gene 396 Human P52565
Background:	ARHGDI Regulates the GDP/GTP exchange reaction of the Rho proteins by inhibiting the dissociation of GDP from them, and the subsequent binding of GTP to them.
Synonyms:	Rho GDI 1, Rho-GDI alpha, RhoGDI1
Note:	Molecular weight: 23207 Da
Protein Families:	Druggable Genome
Protein Pathways:	Neurotrophin signaling pathway



[View online »](#)

Product images:



Western blot analysis of ARHGDI Antibody (C-term) in A375, HL-60, Ramos cell line lysates (35 ug/lane). ARHGDI (arrow) was detected using the purified Pab.