

Product datasheet for **AP17126PU-N**

ARHGAP18 (Center) Rabbit Polyclonal Antibody

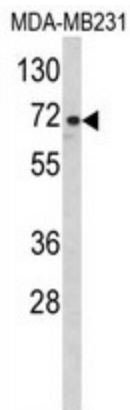
Product data:

Product Type:	Primary Antibodies
Applications:	WB
Recommended Dilution:	Western blot: 1:100 - 1:500. ELISA: 1:1,000.
Reactivity:	Human
Host:	Rabbit
Clonality:	Polyclonal
Immunogen:	KLH conjugated synthetic peptide selected from the Center region of human ARHGAP18
Specificity:	This antibody detects ARHGAP18 at Center.
Formulation:	PBS with 0.09% (W/V) sodium azide State: Liquid Ig fraction
Concentration:	lot specific
Purification:	Purified through a protein A column, followed by peptide affinity purification
Conjugation:	Unconjugated
Storage:	Store the antibody at 2 - 8 °C up to one month or (in aliquots) at -20 °C for longer. Avoid repeated freezing and thawing.
Stability:	Shelf life: one year from despatch.
Gene Name:	Rho GTPase activating protein 18
Database Link:	Entrez Gene 93663 Human Q8N392
Background:	GTPase activator for the Rho-type GTPases by converting them to an inactive GDP-bound state.
Synonyms:	MacGAP
Note:	Molecular weight: 74947 Da



[View online »](#)

Product images:



Western blot analysis of ARHGAP18.