

Product datasheet for **AP17123PU-N**

ARF3 Rabbit Polyclonal Antibody

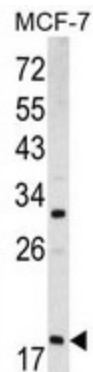
Product data:

Product Type:	Primary Antibodies
Applications:	WB
Recommended Dilution:	Western blot: 1:50 - 1:100. ELISA: 1:1,000.
Reactivity:	Human
Host:	Rabbit
Clonality:	Polyclonal
Immunogen:	KLH conjugated synthetic peptide selected from the Center region of human ARF3
Specificity:	This antibody detects ADP-ribosylation factor 3 (ARF3) at Center D93.
Formulation:	PBS with 0.09% (W/V) sodium azide State: Liquid Ig fraction
Concentration:	lot specific
Purification:	Prepared by Saturated Ammonium Sulfate (SAS) precipitation followed by dialysis against PBS
Conjugation:	Unconjugated
Storage:	Store the antibody at 2 - 8 °C up to one month or (in aliquots) at -20 °C for longer. Avoid repeated freezing and thawing.
Stability:	Shelf life: one year from despatch.
Gene Name:	ADP ribosylation factor 3
Database Link:	Entrez Gene 377 Human P61204
Background:	ADP-ribosylation factor 3 (ARF3) is a member of the human ARF family. These small guanine nucleotide-binding proteins stimulate the ADP-ribosyltransferase activity of cholera toxin and play a role in vesicular trafficking and as activators of phospholipase D. ARF3 include 6 ARF proteins and 11 ARF-like proteins and constitute 1 family of the RAS superfamily. The ARF proteins are categorized as class I (ARF1, ARF2, and ARF3), class II (ARF4 and ARF5) and class III (ARF6) and members of each class share a common gene organization.
Synonyms:	ADP-ribosylation factor 3
Note:	Molecular weight: 35883 Da



[View online »](#)

Product images:



Western blot analysis of ARF3 antibody (Center D93) in MCF-7 cell line lysates (35 ug/lane). ARF3 (arrow) was detected using the purified Pab.