

Product datasheet for **AP17119PU-N**

Apolipoprotein L 4 (APOL4) (Center) Rabbit Polyclonal Antibody

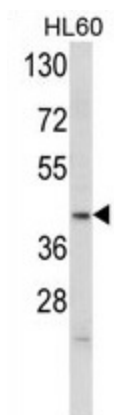
Product data:

Product Type:	Primary Antibodies
Applications:	WB
Recommended Dilution:	Western blot: 1:50 - 1:100. ELISA: 1:1,000.
Reactivity:	Human
Host:	Rabbit
Clonality:	Polyclonal
Immunogen:	KLH conjugated synthetic peptide selected from the Center(E273) region of human APOL4
Specificity:	This antibody detects Apolipoprotein L4 (Apo L4) at Center E273.
Formulation:	PBS with 0.21% (W/V) sodium azide State: Liquid Ig fraction
Concentration:	lot specific
Purification:	Prepared by Saturated Ammonium Sulfate (SAS) precipitation followed by dialysis against PBS
Conjugation:	Unconjugated
Storage:	Store the antibody at 2 - 8 °C up to one month or (in aliquots) at -20 °C for longer. Avoid repeated freezing and thawing.
Stability:	Shelf life: one year from despatch.
Gene Name:	apolipoprotein L4
Database Link:	Entrez Gene 80832 Human Q9BPW4
Background:	APOL4 is a member of the apolipoprotein L family and may play a role in lipid exchange and transport throughout the body, as well as in reverse cholesterol transport from peripheral cells to the liver.
Synonyms:	Apolipoprotein L-IV, ApoL-IV
Note:	Molecular weight: 39164 Da
Protein Families:	Transmembrane



[View online »](#)

Product images:



Western blot analysis of purified Pab.