

Product datasheet for **AP17109PU-N**

Annexin A1 (ANXA1) (Center) Rabbit Polyclonal Antibody

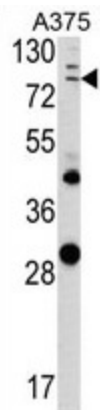
Product data:

Product Type:	Primary Antibodies
Applications:	WB
Recommended Dilution:	Western blot: 1:50 - 1:100. ELISA: 1:1,000.
Reactivity:	Human
Host:	Rabbit
Clonality:	Polyclonal
Immunogen:	KLH conjugated synthetic peptide selected from the Center region of human ANKRD6
Specificity:	This antibody detects Annexin A1 / ANXA1 at Center.
Formulation:	PBS with 0.09% (W/V) sodium azide State: Liquid Ig fraction
Concentration:	lot specific
Purification:	Prepared by Saturated Ammonium Sulfate (SAS) precipitation followed by dialysis against PBS
Conjugation:	Unconjugated
Storage:	Store the antibody at 2 - 8 °C up to one month or (in aliquots) at -20 °C for longer. Avoid repeated freezing and thawing.
Stability:	Shelf life: one year from despatch.
Gene Name:	annexin A1
Database Link:	Entrez Gene 301 Human P04083
Background:	ANKRD6 recruits CKI-epsilon to the beta-catenin degradation complex that consists of AXN1 or AXN2 and GSK3-beta and allows efficient phosphorylation of beta-catenin, thereby inhibiting beta-catenin/Tcf signals (By similarity).
Synonyms:	ANX1, LPC1, Annexin-1, Annexin I, Lipocortin I, Calpactin II, Chromobindin-9, p35
Note:	Molecular weight: 79957 Da
Protein Families:	Druggable Genome



[View online »](#)

Product images:



Western blot analysis of ANKRD6 Antibody (Center) in A375 cell line lysates (35 ug/lane). ANKRD6 (arrow) was detected using the purified Pab.