

Product datasheet for **AP17106PU-N**

Angiopoietin like 7 (ANGPTL7) (N-term) Rabbit Polyclonal Antibody

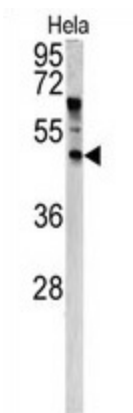
Product data:

Product Type:	Primary Antibodies
Applications:	WB
Recommended Dilution:	Western blot: 1:50 - 1:100. ELISA: 1:1,000.
Reactivity:	Human
Host:	Rabbit
Clonality:	Polyclonal
Immunogen:	KLH conjugated synthetic peptide selected from the N-terminal region of human ANGPTL7
Specificity:	This antibody detects ANGPTL7 at N-term.
Formulation:	PBS with 0.09% (W/V) sodium azide State: Liquid Ig fraction
Concentration:	lot specific
Purification:	Prepared by Saturated Ammonium Sulfate (SAS) precipitation followed by dialysis against PBS
Conjugation:	Unconjugated
Storage:	Store the antibody at 2 - 8 °C up to one month or (in aliquots) at -20 °C for longer. Avoid repeated freezing and thawing.
Stability:	Shelf life: one year from despatch.
Gene Name:	angiopoietin like 7
Database Link:	Entrez Gene 10218 Human O43827
Background:	Angiopoietin like 7 contains 1 fibrinogen C-terminal domain and it highly and specifically expressed in the cornea where is confined to the stromal layer.
Synonyms:	Angiopoietin-related protein 7, Angiopoietin-like 7, CDT6
Note:	Molecular weight: 40018 Da
Protein Families:	Druggable Genome, Secreted Protein, Transmembrane



[View online »](#)

Product images:



Western blot analysis of ANGPTL7 antibody (N-term) in HeLa cell line lysates (35 ug/lane). ANGPTL7 (arrow) was detected using the purified Pab.