

## Product datasheet for **AP17102PU-N**

### ALS2 (C-term) Rabbit Polyclonal Antibody

#### Product data:

Product Type:	Primary Antibodies
Applications:	WB
Recommended Dilution:	Western blot: 1:50 - 1:100. ELISA: 1:1,000.
Reactivity:	Human, Mouse
Host:	Rabbit
Clonality:	Polyclonal
Immunogen:	KLH conjugated synthetic peptide selected from the C-terminal region of human ALS2
Specificity:	This antibody detects Alsin / ALS2 at C-term.
Formulation:	PBS with 0.09% (W/V) sodium azide State: Liquid Ig fraction
Concentration:	lot specific
Purification:	Prepared by Saturated Ammonium Sulfate (SAS) precipitation followed by dialysis against PBS
Conjugation:	Unconjugated
Storage:	Store the antibody at 2 - 8 °C up to one month or (in aliquots) at -20 °C for longer. Avoid repeated freezing and thawing.
Stability:	Shelf life: one year from despatch.
Gene Name:	ALS2, alsin Rho guanine nucleotide exchange factor
Database Link:	<a href="#">Entrez Gene 74018 Mouse</a> <a href="#">Entrez Gene 57679 Human</a> <a href="#">Q96Q42</a>
Background:	ALS2 contains an ATS1/RCC1-like domain, a RhoGEF domain, and a vacuolar protein sorting 9 (VPS9) domain, all of which are guanine-nucleotide exchange factors that activate members of the Ras superfamily of GTPases. The protein functions as a guanine nucleotide exchange factor for the small GTPase RAB5. The protein localizes with RAB5 on early endosomal compartments, and functions as a modulator for endosomal dynamics. Mutations in its gene result in several forms of juvenile lateral sclerosis and infantile-onset ascending spastic paralysis.
Synonyms:	ALS2CR6, KIAA1563



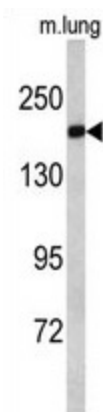
[View online »](#)

Note: Molecular weight: 183666 Da

Protein Families: Druggable Genome

Protein Pathways: Amyotrophic lateral sclerosis (ALS)

### Product images:



Western blot analysis of ALS2 antibody (C-term) in mouse lung tissue lysates (35 ug/lane). ALS2 (arrow) was detected using the purified Pab.