

Product datasheet for **AP17099PU-N**

ALAD (C-term) Rabbit Polyclonal Antibody

Product data:

Product Type:	Primary Antibodies
Applications:	WB
Recommended Dilution:	Western blot: 1:50 - 1:100. ELISA: 1:1,000.
Reactivity:	Human
Host:	Rabbit
Clonality:	Polyclonal
Immunogen:	KLH conjugated synthetic peptide selected from the C-terminal region of human ALAD
Specificity:	This antibody detects ALAD at C-term.
Formulation:	PBS with 0.121% (W/V) sodium azide State: Liquid Ig fraction
Concentration:	lot specific
Purification:	Prepared by Saturated Ammonium Sulfate (SAS) precipitation followed by dialysis against PBS
Conjugation:	Unconjugated
Storage:	Store at 2 - 8 °C for up to one month or (in aliquots) at -20 °C for longer. Avoid repeated freezing and thawing.
Stability:	Shelf life: one year from despatch.
Gene Name:	aminolevulinate dehydratase
Database Link:	Entrez Gene 210 Human P13716
Background:	The ALAD enzyme is composed of 8 identical subunits and catalyzes the condensation of 2 molecules of delta-aminolevulinate to form porphobilinogen (a precursor of heme, cytochromes and other hemoproteins). ALAD catalyzes the second step in the porphyrin and heme biosynthetic pathway; zinc is essential for enzymatic activity. ALAD enzymatic activity is inhibited by lead and a defect in the ALAD structural gene can cause increased sensitivity to lead poisoning and acute hepatic porphyria.
Synonyms:	Delta-aminolevulinic acid dehydratase, ALADH, Porphobilinogen synthase
Note:	Molecular weight: 36295 Da

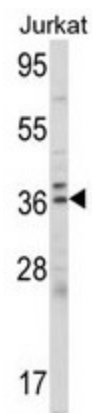


[View online »](#)

Protein Families: Druggable Genome

Protein Pathways: Metabolic pathways, Porphyrin and chlorophyll metabolism

Product images:



Western blot analysis of ALAD Antibody (C-term) in Jurkat cell line lysates (35 ug/lane). ALAD (arrow) was detected using the purified Pab.