

Product datasheet for **AP17097PU-N**

AKAP3 Rabbit Polyclonal Antibody

Product data:

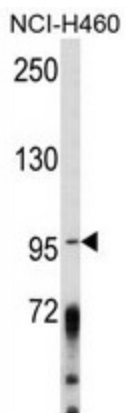
Product Type:	Primary Antibodies
Applications:	WB
Recommended Dilution:	Western blot: 1:100 - 1:500. ELISA: 1:1,000.
Reactivity:	Human
Host:	Rabbit
Clonality:	Polyclonal
Immunogen:	KLH conjugated synthetic peptide selected from the Center region of human AKAP3
Specificity:	This antibody detects AKAP3 at Center.
Formulation:	PBS with 0.09% (W/V) sodium azide State: Liquid Ig fraction
Concentration:	lot specific
Purification:	Purified through a protein A column, followed by peptide affinity purification
Conjugation:	Unconjugated
Storage:	Store the antibody undiluted at 2-8°C for one month or (in aliquots) at -20°C for longer. Avoid repeated freezing and thawing.
Stability:	Shelf life: one year from despatch.
Gene Name:	A-kinase anchoring protein 3
Database Link:	Entrez Gene 10566 Human O75969
Background:	A-kinase anchor proteins (AKAPs) direct the activity of protein kinase A (PKA) by tethering the enzyme near its physiologic substrates. AKAP3 belongs to the AKAP110 family. Expression is testis specific, and is only expressed in spermatids. It is thought to function as a regulator of both motility- and head-associated functions such as capacitation and the acrosome reaction in sperm. AKAP3 may function as a regulator of both motility-and head-associated functions such as capacitation and the acrosome reaction.
Synonyms:	AKAP110, SOB1, Fibrousheathin-1, Fibrousheathin I, PRKA3



[View online »](#)

Note: Molecular weight: 94736 Da

Protein Families: Druggable Genome

Product images:

Western blot analysis of AKrifed Pab.