

## Product datasheet for **AP17095PU-N**

### **AHA1 (AHS1) (N-term) Rabbit Polyclonal Antibody**

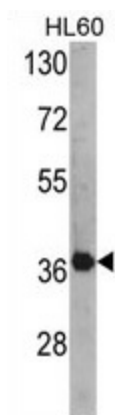
#### **Product data:**

<b>Product Type:</b>	Primary Antibodies
<b>Applications:</b>	WB
<b>Recommended Dilution:</b>	Western blot: 1:50 - 1:100. ELISA: 1:1,000.
<b>Reactivity:</b>	Human
<b>Host:</b>	Rabbit
<b>Clonality:</b>	Polyclonal
<b>Immunogen:</b>	KLH conjugated synthetic peptide selected from the N-terminal region of human AHS1
<b>Specificity:</b>	This antibody detects AHA1 / AHS1 at N-term.
<b>Formulation:</b>	PBS with 0.09% (W/V) sodium azide State: Liquid Ig fraction
<b>Concentration:</b>	lot specific
<b>Purification:</b>	Prepared by Saturated Ammonium Sulfate (SAS) precipitation followed by dialysis against PBS
<b>Conjugation:</b>	Unconjugated
<b>Storage:</b>	Store at 2 - 8 °C for up to one month or (in aliquots) at -20 °C for longer. Avoid repeated freezing and thawing.
<b>Stability:</b>	Shelf life: one year from despatch.
<b>Gene Name:</b>	activator of Hsp90 ATPase activity 1
<b>Database Link:</b>	<a href="#">Entrez Gene 10598 Human O95433</a>
<b>Background:</b>	AHA1 is a member of the HSP90 co-chaperone family. AHA1 is thought to stimulate HSP90 ATPase activity by competing with p23 and other cochaperones for Hsp90 binding. It may affect a step in the endoplasmic reticulum to Golgi trafficking. AHA1 also interacts with HSPCA/HSP90 and with the cytoplasmic tail of the vesicular stomatitis virus glycoprotein (VSV G). AHA1 is expressed in numerous tissues, including brain, heart, skeletal muscle and kidney and, at lower levels, liver and placenta.
<b>Synonyms:</b>	C14orf3, HSPC322
<b>Note:</b>	Molecular weight: 38274 Da



[View online »](#)

## Product images:



Western blot analysis of AHA1 Antibody (N-term) in HL60 cell line lysates (35 ug/lane). AHA1 (arrow) was detected using the purified Pab.