

## Product datasheet for **AP17090PU-N**

### Arp3 (ACTR3) (C-term) Rabbit Polyclonal Antibody

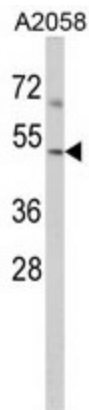
#### Product data:

Product Type:	Primary Antibodies
Applications:	WB
Recommended Dilution:	Western blot: 1:50 - 1:100. ELISA: 1:1,000.
Reactivity:	Human
Host:	Rabbit
Clonality:	Polyclonal
Immunogen:	KLH conjugated synthetic peptide selected from the C-terminal region of human ACTR3
Specificity:	This antibody detects ACTR3 at C-term.
Formulation:	PBS with 0.09% (W/V) sodium azide State: Liquid Ig fraction
Concentration:	lot specific
Purification:	Prepared by Saturated Ammonium Sulfate (SAS) precipitation followed by dialysis against PBS
Conjugation:	Unconjugated
Storage:	Store at 2 - 8 °C for up to one month or (in aliquots) at -20 °C for longer. Avoid repeated freezing and thawing.
Stability:	Shelf life: one year from despatch.
Gene Name:	ARP3 actin-related protein 3 homolog (yeast)
Database Link:	<a href="#">Entrez Gene 10096 Human P61158</a>
Background:	ACTR3 is known to be a major constituent of the ARP2/3 complex. This complex is located at the cell surface and is essential to cell shape and motility through lamellipodial actin assembly and protrusion.
Synonyms:	ARP3
Note:	Molecular weight: 47371 Da
Protein Families:	Druggable Genome



[View online »](#)

## Product images:



Western blot analysis of ACTR3 Antibody (C-term) in A2058 cell line lysates (35 ug/lane). ACTR3 (arrow) was detected using the purified Pab.