

Product datasheet for **AP17086PU-N**

alpha Actinin (ACTN1) (N-term) Rabbit Polyclonal Antibody

Product data:

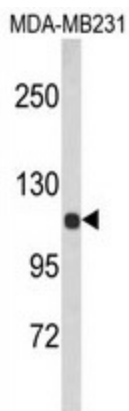
Product Type:	Primary Antibodies
Applications:	WB
Recommended Dilution:	Western blot: 1:100 - 1:500. ELISA: 1:1,000.
Reactivity:	Human
Host:	Rabbit
Clonality:	Polyclonal
Immunogen:	KLH conjugated synthetic peptide selected from the N-terminal region of human ACTN1
Specificity:	This antibody detects Alpha-actinin-1 / ACTN1 at N-term.
Formulation:	PBS with 0.09% (W/V) sodium azide State: Liquid Ig fraction
Concentration:	lot specific
Purification:	Purified through a protein A column, followed by peptide affinity purification
Conjugation:	Unconjugated
Storage:	Store at 2 - 8 °C for up to one month or (in aliquots) at -20 °C for longer. Avoid repeated freezing and thawing.
Stability:	Shelf life: one year from despatch.
Gene Name:	actinin alpha 1
Database Link:	Entrez Gene 87 Human P12814
Background:	ACTN1 is a F-actin cross-linking protein which is thought to anchor actin to a variety of intracellular structures. This is a bundling protein.
Synonyms:	Alpha actinin cytoskeletal isoform, Non-muscle alpha-actinin 1
Note:	Molecular weight: 103058 Da
Protein Families:	Druggable Genome, ES Cell Differentiation/IPS



[View online »](#)

Protein Pathways:

Adherens junction, Arrhythmogenic right ventricular cardiomyopathy (ARVC), Focal adhesion, Leukocyte transendothelial migration, Regulation of actin cytoskeleton, Systemic lupus erythematosus, Tight junction

Product images:

Western blot analysis of ACTN1 Antibody (N-term) in MDA-MB231 cell line lysates (35 ug/lane). ACTN1 (arrow) was detected using the purified Pab.