

Product datasheet for **AP17071PU-N**

ABCG1 Rabbit Polyclonal Antibody

Product data:

Product Type:	Primary Antibodies
Applications:	FC, IHC, WB
Recommended Dilution:	Western blot: 1/1000. Flow Cytometry: 1/10-1/50. Immunohistochemistry: 1/10-1/50.
Reactivity:	Human
Host:	Rabbit
Isotype:	Ig
Clonality:	Polyclonal
Immunogen:	KLH conjugated synthetic peptide between 366~395 from the Center region of Human ABCG1
Specificity:	This antibody detects ABCG1 at Center.
Formulation:	PBS with 0.09% (W/V) sodium azide State: Purified State: Liquid purified Ig fraction
Concentration:	lot specific
Purification:	Prepared by Saturated Ammonium Sulfate (SAS) precipitation followed by dialysis against PBS
Conjugation:	Unconjugated
Storage:	Store the antibody undiluted at 2-8°C for one month or (in aliquots) at -20°C. Avoid repeated freezing and thawing.
Stability:	Shelf life: one year from despatch.
Gene Name:	ATP binding cassette subfamily G member 1
Database Link:	Entrez Gene 9619 Human P45844



[View online »](#)

Background:

ABCG1, one of five members of the ABCG subfamily, belongs to the large family of ATP-binding cassette (ABC) transporters. The protein is expressed in the plasma membrane of adipocytes, macrophages and other cell types. In these cells, ABCG1 facilitates cholesterol efflux to apoA1 and/or high-density lipoprotein (HDL). The function of ABCG1 is linked to both obesity and atherosclerosis. First, studies in *Abcg1* knockout mice showed that the gene deletion resulted in a significantly reduced size of fat cells. Second, the activation of ABCG1 expression promoted atherosclerotic lesion development while inactivation of macrophage ABCG1 expression reduced it in proatherogenic mice. In addition, ABCG1 plays a key role in lipoprotein formation by glia.

Synonyms:

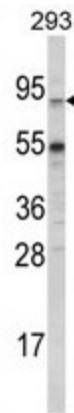
ABC8, WHT1

Protein Families:

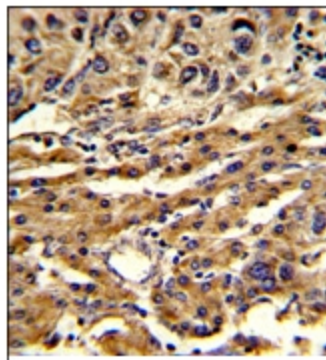
Druggable Genome, Transmembrane

Protein Pathways:

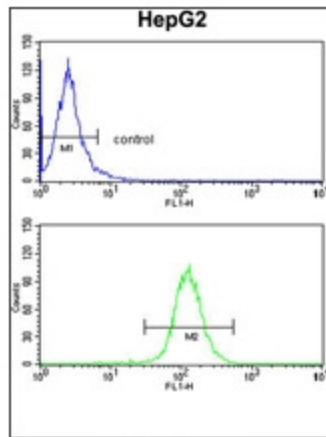
ABC transporters

Product images:


Western blot analysis of ABCG1 Antibody (Center) in 293 cell line lysates (35ug/lane). ABCG1 (arrow) was detected using the purified Pab.



ABCG1 Antibody staining of Formalin-fixed and paraffin-embedded human hepatocarcinoma using peroxidase followed by DAB staining.



Flow Cytometry: ABCG1 Antibody staining of HepG2 cells (bottom histogram) compared to a negative control cell (top histogram). FITC-conjugated goat-anti-rabbit secondary antibodies were used for the analysis.