

Product datasheet for **AP16929PU-N**

Synaptotagmin 1 (SYT1) Goat Polyclonal Antibody

Product data:

Product Type:	Primary Antibodies
Applications:	ELISA, IHC, WB
Recommended Dilution:	Peptide ELISA: Detection Limit: 1/16000. Western Blot: 0.3-1 µg/ml. Approx. 65kDa band observed in Human Brain (hippocampus) and Mouse and Rat Brain lysates (calculated MW of 47.6kDa according to NP_005630.1). The observed molecular weight corresponds to earlier findings in literature with different antibodies (Matthew et al, J Cell Biol. 1981 Oct;91(1):257-69.; PMID: 7298720). Immunohistochemistry on Paraffin Sections: 4-6 µg/ml. In paraffin embedded Human Brain shows vesicular staining in neuronal cell and axon.
Reactivity:	Bovine, Canine, Human, Mouse, Rat
Host:	Goat
Clonality:	Polyclonal
Immunogen:	Peptide with sequence from the internal region of the protein sequence according to NP_005630.1.
Specificity:	This antibody recognizes Synaptotagmin I.
Formulation:	Tris saline, pH~7.3 containing 0.02% Sodium Azide as preservative and 0.5% BSA as stabilizer State: Aff - Purified State: Liquid purified Ig fraction
Concentration:	lot specific
Purification:	Ammonium Sulphate Precipitation followed by Antigen Affinity Chromatography using the immunizing peptide
Conjugation:	Unconjugated
Storage:	Store the antibody undiluted at 2-8°C for one month or (in aliquots) at -20°C for longer. Avoid repeated freezing and thawing.
Stability:	Shelf life: one year from despatch.
Gene Name:	synaptotagmin 1
Database Link:	Entrez Gene 6857 Human P21579



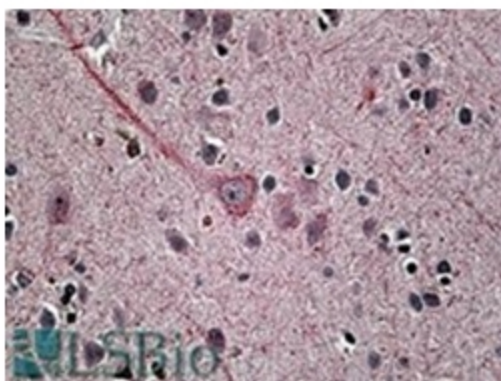
[View online »](#)

Synonyms: SYT1, SVP65, SYT, Synaptotagmin1, Synaptotagmin I, SytI, p65

Product images:



Antibody (1ug/ml) staining of Human Hippocampus lysate (35ug protein in RIPA buffer). Primary incubation was 1 hour. Detected by chemiluminescence.



SYT1 antibody staining of paraffin embedded Human Brain at 3.8 ug/ml. Steamed antigen retrieval with citrate buffer pH 6, AP-staining.