

## Product datasheet for **AP16661PU-N**

### LINC02210-CRHR1 (250-263) Goat Polyclonal Antibody

#### Product data:

|                       |  |
|-----------------------|--|
| Product Type:         | Primary Antibodies   |
| Applications:         | ELISA, IF, IHC   |
| Recommended Dilution: | <b>Peptide ELISA:</b> 1/1000 (Detection Limit).<br><b>Western Blot:</b> Preliminary experiments in human colon, duodenum and placenta lysates gave no specific signal but low background (at antibody concentration up to 1 µg/ml).<br><b>Immunohistochemistry on Paraffin Sections:</b> 5 µg/ml. Paraffin embedded Human Brain (Cortex).<br><b>Immunofluorescence</b> on Mouse Prefrontal Cortical Neurons. |
| Reactivity:           | Bovine, Canine, Human, Mouse, Rat, Sheep   |
| Host:                 | Goat   |
| Clonality:            | Polyclonal   |
| Immunogen:            | Peptide with sequence KLYYDNEKCWFGKR from the internal region of the protein sequence according to NP_004373.2.  |
| Specificity:          | This antibody recognizes CRHR1 / CRF-R (250-263).  |
| Formulation:          | Tris saline, pH~7.3<br>State: Aff - Purified<br>State: Liquid purified Ig fraction<br>Stabilizer: 0.5% BSA<br>Preservative: 0.02% Sodium Azide   |
| Concentration:        | lot specific   |
| Purification:         | Ammonium Sulphate Precipitation followed by Antigen Affinity Chromatography using the immunizing peptide   |
| Conjugation:          | Unconjugated   |
| Storage:              | Store undiluted at 2-8°C for one month or (in aliquots) at -20°C for longer.<br>Avoid repeated freezing and thawing.   |
| Stability:            | Shelf life: one year from despatch.  |
| Gene Name:            | LINC02210-CRHR1 readthrough  |
| Database Link:        | <a href="#">Entrez Gene 104909134 Human P34998</a>   |

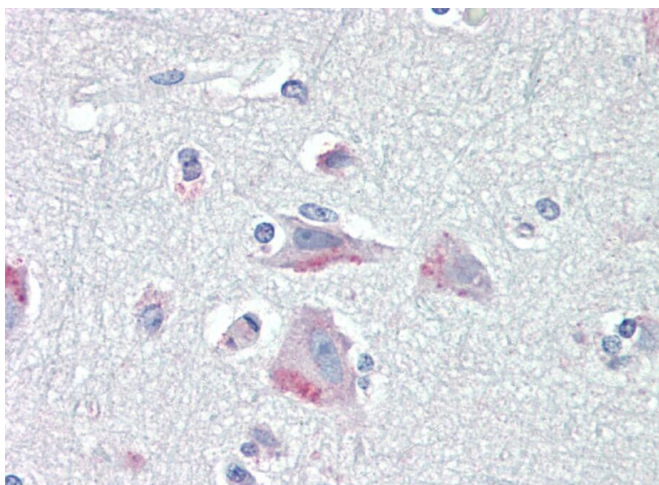


[View online »](#)

**Background:** CRF1 is a receptor for corticotropin releasing factor. It shows high affinity CRF binding. The activity of this receptor is mediated by G proteins which activate adenylyl cyclase.

**Synonyms:** CRHR-1, CRFR, CRFR1, CRHR, Corticotropin-releasing factor receptor 1, CRF-R, CRF1, Corticotropin-releasing hormone receptor 1, CRH-R 1

**Product images:**



AP16661PU-N (5ug/ml) staining of paraffin embedded Human Cortex. Steamed antigen retrieval with citrate buffer pH 6, AP-staining.