

Product datasheet for **AP16447PU-N**

ERG (C-term) Goat Polyclonal Antibody

Product data:

Product Type:	Primary Antibodies
Applications:	IHC, WB
Recommended Dilution:	Peptide ELISA: 1/16000 (Detection Limit). Western blot: Approx 55kDa band observed in lysates of cell line MOLT4 (calculated MW of 53.8kDa according to NP_891548.1). <i>Recommended concentration:</i> 0.1-0.3 µg/ml. Primary incubation was 1 hour.
Reactivity:	Human, Mouse, Rat
Host:	Goat
Clonality:	Polyclonal
Immunogen:	Synthetic peptide from the C-Terminus of Human ERG (NP_891548.1; NP_004440.1; NP_001129626.1; NP_001129627.1; NP_001230358.1)
Specificity:	This antibody is expected to recognize all reported isoforms (NP_891548.1; NP_004440.1; NP_001129626.1; NP_001129627.1; NP_001230358.1).
Formulation:	Tris saline, pH~7.3 State: Aff - Purified State: Liquid purified Ig fraction Stabilizer: 0.5% BSA Preservative: 0.02% Sodium Azide
Concentration:	lot specific
Purification:	Ammonium Sulphate Precipitation followed by Antigen Affinity Chromatography using the immunizing peptide
Conjugation:	Unconjugated
Storage:	Store undiluted at 2-8°C for one month or (in aliquots) at -20°C for longer. Avoid repeated freezing and thawing.
Stability:	Shelf life: one year from despatch.
Gene Name:	ERG, ETS transcription factor
Database Link:	Entrez Gene 2078 Human P11308

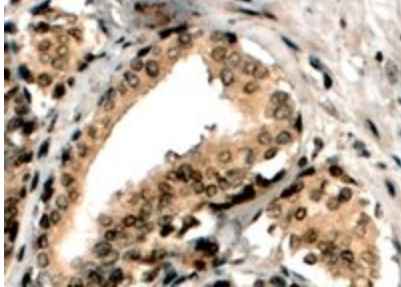


[View online »](#)

Background: ERG (v-ets erythroblastosis virus E26 oncogene like isoform 2) is a transcriptional regulator. It may participate in transcriptional regulation through the recruitment of SETDB1 histone methyltransferase and subsequent modification of local chromatin structure.

Synonyms: Transcriptional regulator ERG, Transforming protein ERG

Product images:



Immunohistochemistry: (4ug/ml) staining of paraffin embedded Human Prostate. Steamed antigen retrieval with Tris/EDTA buffer pH 9, HRP-staining.