

Product datasheet for **AP16308PU-N**

COMT (N-term) Goat Polyclonal Antibody

Product data:

Product Type:	Primary Antibodies
Applications:	WB
Recommended Dilution:	Peptide ELISA: Detection Limit Dilution: 1/4000. Western Blot: 0.3-1.0 µg/ml. Approx 26kDa plus 29kDa bands observed in Human Testis lysates (calculated MW of 30.0kDa according to NP_000745.1 and of 24.5kDa according to NP_009294.1).
Reactivity:	Canine, Human, Mouse, Rat
Host:	Goat
Clonality:	Polyclonal
Immunogen:	Peptide with sequence GDTKEQRILNHVLQC, from the N-Terminus of the protein sequence
Specificity:	This antibody is expected to recognise both reported isoforms. Variants (NP_000745.1, NP_001128633.1 and NP_001128634.1) encode the same isoform.
Formulation:	Tris saline, pH 7.3 containing 0.02% Sodium Azide as preservative and 0.5% BSA as stabilizer. State: Aff - Purified State: Liquid purified IgG fraction.
Concentration:	lot specific
Purification:	Ammonium Sulphate Precipitation followed by Antigen Affinity Chromatography using the immunizing peptide.
Conjugation:	Unconjugated
Storage:	Store the antibody undiluted at 2-8°C for one month or (in aliquots) at -20°C for longer. Avoid repeated freezing and thawing.
Stability:	Shelf life: one year from despatch.
Gene Name:	catechol-O-methyltransferase
Database Link:	Entrez Gene 1312 Human P21964



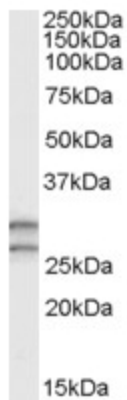
[View online »](#)

Background:

Catechol-O-methyltransferase catalyzes the transfer of a methyl group from S-adenosylmethionine to catecholamines, including the neurotransmitters dopamine, epinephrine, and norepinephrine. This O-methylation results in one of the major degradative pathways of the catecholamine transmitters. In addition to its role in the metabolism of endogenous substances, COMT is important in the metabolism of catechol drugs used in the treatment of hypertension, asthma, and Parkinson disease.

Synonyms:

Catechol O-methyltransferase

Product images:

Staining of Human testis lysate (35ug protein in RIPA buffer) with COMT Antibody (at 0.3 ug/ml). Primary incubation was 1 hour. Detected by chemiluminescence.