

Product datasheet for **AP16297PU-N**

VMAT2 (SLC18A2) (C-term) Goat Polyclonal Antibody

Product data:

Product Type:	Primary Antibodies
Applications:	IHC, PEP-ELISA, WB
Recommended Dilution:	Peptide ELISA: 1/128000 (Detection Limit). Western Blot: 1-3 µg/ml. Approx 55kDa band observed in Human Placenta and Adrenal Gland lysates (calculated MW of 55.7kDa according to NP_003045.2). Primary incubation was 1 hour. Preliminary testing was unsuccessful on Rat Brain for this particular batch. Immunohistochemistry on Paraffin Sections: 2-5 µg/ml. In Paraffin Embedded Human Adrenal Gland shows cytoplasm staining of some epithelial cells in the medula. In paraffin embedded Human Adrenal Gland expression of SLC18A2 is detected in chromaffin cells.
Reactivity:	Bovine, Canine, Human, Mouse, Porcine, Rat
Host:	Goat
Clonality:	Polyclonal
Immunogen:	Peptide with sequence from the C Terminus of the protein sequence according to NP_003045.2.
Specificity:	This antibody recognizes VMAT2.
Formulation:	Tris saline, pH~7.3 State: Aff - Purified State: Liquid purified Ig fraction Stabilizer: 0.5% BSA Preservative: 0.02% Sodium Azide
Concentration:	lot specific
Purification:	Ammonium Sulphate Precipitation followed by Antigen Affinity Chromatography using the immunizing peptide.
Conjugation:	Unconjugated
Storage:	Store undiluted at 2-8°C for one month or (in aliquots) at -20°C for longer. Avoid repeated freezing and thawing.
Stability:	Shelf life: one year from despatch.



[View online »](#)

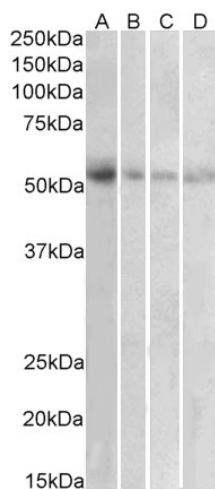
Gene Name: solute carrier family 18 member A2

Database Link: [Entrez Gene 6571 Human Q05940](#)

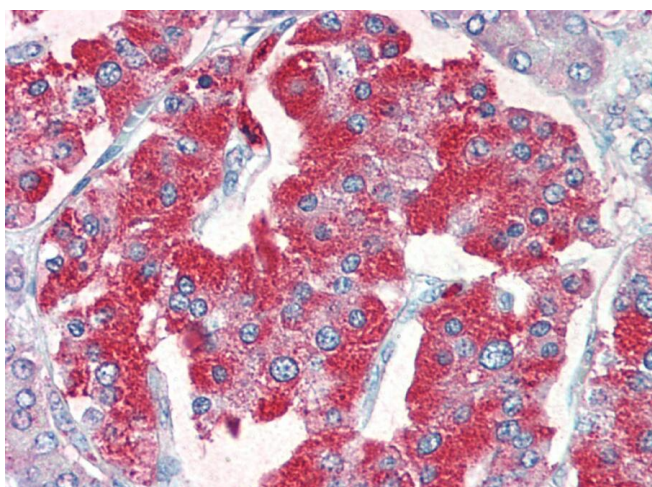
Background: The vesicular monoamine transporter is responsible for the vesicular uptake of monoamines, like dopamine, norepinephrine, epinephrine, serotonin and histamine. The antiserum recognizes monoaminergic neurons of the CNS, the ECL-cells of the stomach, as well as enteric nerve fibers.

Synonyms: SVMT, VAT2

Product images:



AP16297PU-N (1 ug/ml) staining of Human Placenta (A), Human Uterus (B), Human Adrenal Gland (C) and Human Pancreas (D) lysates (35ug protein in RIPA buffer). Primary incubation was 1 hour. Detected by chemiluminescence.



AP16297PU-N (5ug/ml) staining of paraffin embedded Human Pancreas. Steamed antigen retrieval with citrate buffer pH 6, AP-staining.