

## Product datasheet for **AP16056PU-N**

### UBE2C (C-term) Goat Polyclonal Antibody

#### Product data:

Product Type:	Primary Antibodies
Applications:	ELISA, FC, IF, IP, WB
Recommended Dilution:	<b>Peptide ELISA:</b> 1/32000 (Detection Limit). <b>Western blot:</b> 1-3 µg/ml. Detects a band of ~20KDa in mitotic (i.e Nocodazole arrested) HeLa whole cell lysates. <b>Flow Cytometry</b> analysis of HeLa cells: 10 µg/ml. <b>Immunoprecipitation:</b> 20KDa band precipitated from mitotic HeLa whole cell lysates using protein-G dynabeads. <b>Immunofluorescence:</b> 10 µg/ml. Strong expression of the protein seen in the cytoplasm of U2OS and MCF7 cells.
Reactivity:	Human
Host:	Goat
Clonality:	Polyclonal
Immunogen:	Peptide from C Terminus of the protein sequence according to NP_008950.1; NP_861515.1; NP_861516.1; NP_861517.1; NP_861518.1.
Specificity:	This antibody is expected to recognise all reported isoforms. Variants NP_861517.1 and NP_861518.1 encode the same isoform.
Formulation:	Tris saline, pH~7.3 containing 0.02% Sodium Azide as preservative and 0.5% BSA as stabilizer State: Aff - Purified State: Liquid purified Ig fraction
Concentration:	lot specific
Purification:	Ammonium Sulphate Precipitation followed by Antigen Affinity Chromatography using the immunizing peptide
Conjugation:	Unconjugated
Gene Name:	ubiquitin conjugating enzyme E2 C
Database Link:	<a href="#">Entrez Gene 11065 Human</a> <a href="#">O00762</a>



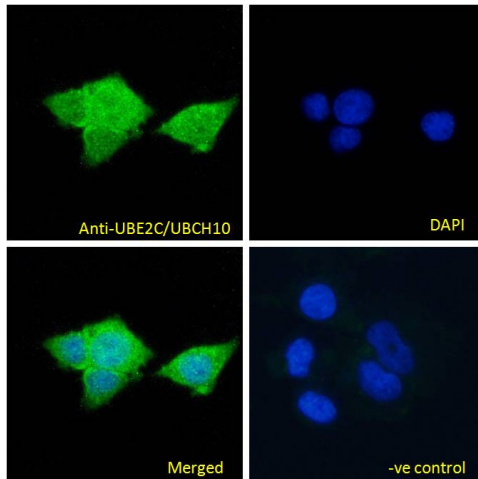
[View online »](#)

**Background:**

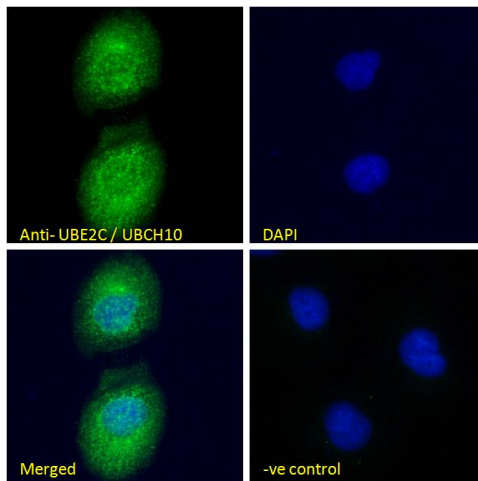
The modification of proteins with ubiquitin is an important cellular mechanism for targeting abnormal or short-lived proteins for degradation. Ubiquitination involves at least three classes of enzymes: ubiquitin-activating enzymes, or E1s, ubiquitin-conjugating enzymes, or E2s, and ubiquitin-protein ligases, or E3s. UBE2C is a member of the E2 ubiquitin-conjugating enzyme family. This enzyme is required for the destruction of mitotic cyclins and for cell cycle progression.

**Synonyms:**

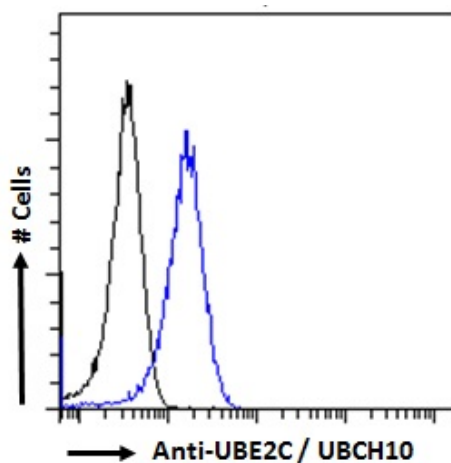
Ubiquitin-conjugating enzyme E2 C, Ubiquitin-protein ligase C, Ubiquitin carrier protein C

**Product images:**


Immunofluorescence analysis of paraformaldehyde fixed MCF7 cells, permeabilized with 0.15% Triton. Primary incubation 1hr (10ug/ml) followed by Alexa Fluor 488 secondary antibody (4ug/ml), showing cytoplasmic staining. The nuclear stain is DAPI (blue). Negative control: Unimmunized goat IgG (10ug/ml) followed by Alexa Fluor 488 secondary antibody (4ug/ml).



Immunofluorescence analysis of paraformaldehyde fixed U2OS cells, permeabilized with 0.15% Triton. Primary incubation 1hr (10ug/ml) followed by Alexa Fluor 488 secondary antibody (4ug/ml), showing cytoplasmic /Plasma Membrane staining. The nuclear stain is DAPI (blue). Negative control: Unimmunized goat IgG (10ug/ml) followed by Alexa Fluor 488 secondary antibody (4ug/ml).



Flow cytometric analysis of paraformaldehyde fixed HeLa cells (blue line), permeabilized with 0.5% Triton. Primary incubation 1hr (10ug/ml) followed by Alexa Fluor 488 secondary antibody (2ug/ml). IgG control: Unimmunized goat IgG (2ug/ml) followed by Alexa Fluor 488 secondary antibody.