

## Product datasheet for **AP16042PU-N**

### **PAX8 (N-term) Goat Polyclonal Antibody**

#### **Product data:**

Product Type:	Primary Antibodies
Applications:	ELISA, IHC, WB
Recommended Dilution:	<b>Peptide ELISA:</b> 1/128000 (Detection Limit). <b>Western blot:</b> 1-2 µg/ml. Approx 35kDa band observed in Human Kidney lysates. An additional 48kDa was also observed in some Kidney and HeLa cell lysates (calculated MW of 34.9kDa according to Human NP_039247.1 PAX8D and 48.2kDa according to Human NP_003457.1 PAXA).
Reactivity:	Human, Mouse, Rat
Host:	Goat
Clonality:	Polyclonal
Immunogen:	Peptide from N Terminus of the protein sequence according to NP_003457.1; NP_039245.1; NP_039246.1; NP_039247.1; NP_054698.1.
Specificity:	This antibody is expected to recognise all five isoforms of Human PAX8.
Formulation:	Tris saline, pH~7.3 State: Aff - Purified State: Liquid purified Ig fraction Stabilizer: 0.5% BSA Preservative: 0.02% Sodium Azide
Concentration:	lot specific
Purification:	Ammonium Sulphate Precipitation followed by antigen Affinity Chromatography using the immunizing peptide
Conjugation:	Unconjugated
Storage:	Store undiluted at 2-8°C for one month or (in aliquots) at -20°C for longer. Avoid repeated freezing and thawing.
Stability:	Shelf life: one year from despatch.
Gene Name:	paired box 8
Database Link:	<a href="#">Entrez Gene 7849 Human Q06710</a>



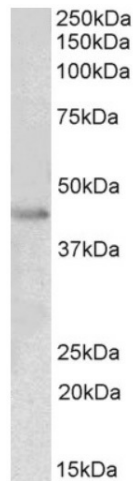
[View online »](#)

**Background:**

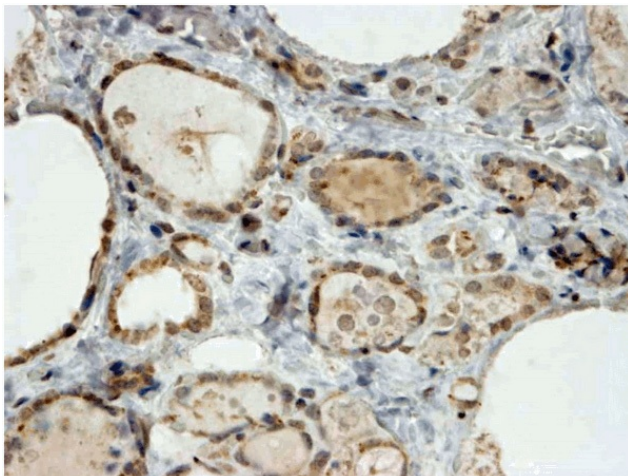
This protein is a member of the paired box (PAX) family of transcription factors, typically containing a paired box domain, an octapeptide, and a paired-type homeodomain. This family plays critical roles during fetal development and cancer growth. The specific function of the PAX8 is unknown but it may involve kidney cell differentiation, thyroid development, or thyroid dysgenesis. Alternative splicing in the gene by inclusion or exclusion of exons 7 and/or 8 has produced several known products but the biological significance of the variants is unknown. Several other splice variants have been proposed but the full nature of these products has not been described. Pax8 is also a marker of otic progenitor cells.

**Synonyms:**

Pax-8

**Product images:**

Staining of Human Kidney lysate using PAX8 Antibody at 1.5 ug/ml (35ug protein in RIPA buffer). Primary incubation was 1 hour. Detected by chemiluminescence. (35ug protein in RIPA buffer). Primary incubation was 1 hour. Detected by chemiluminescence.



Staining of paraffin embedded Human Thyroid Gland using PAX8 Antibody at 2 ug/ml. Steamed antigen retrieval with citrate buffer pH 6, HRP-staining.