

## Product datasheet for **AP16036PU-N**

### KIF4A (C-term) Goat Polyclonal Antibody

#### Product data:

Product Type:	Primary Antibodies
Applications:	FC, IF, WB
Recommended Dilution:	<b>Peptide ELISA:</b> 1/64000 (Detection Limit). <b>Western blot:</b> 1-2 µg/ml. Approx 150kDa band observed in nuclear lysates of cell line NIH3T3 (calculated MW of 139.5kDa according to Mouse NP_032472.2). <i>Primary incubation:</i> 1 hour at room temperature. <i>Negative Control:</i> Human Ovary lysate. <b>Immunofluorescence:</b> 10 µg/ml. Strong expression of the protein seen in the nucleus of U2OS cells. <b>Flow Cytometry</b> analysis of HEK293 cell: 10µg/ml.
Reactivity:	Bovine, Human, Mouse, Porcine, Rat
Host:	Goat
Clonality:	Polyclonal
Immunogen:	Synthetic peptide from the C-Terminus of Human KIF4A (NP_036442.3)
Specificity:	This antibody detects KIF4A at C-term.
Formulation:	Tris saline, pH~7.3 State: Aff - Purified State: Liquid purified Ig fraction Stabilizer: 0.5% BSA Preservative: 0.02% Sodium Azide
Concentration:	lot specific
Purification:	Ammonium Sulphate Precipitation followed by Antigen Affinity Chromatography using the immunizing peptide
Conjugation:	Unconjugated
Storage:	Store undiluted at 2-8°C for one month or (in aliquots) at -20°C for longer. Avoid repeated freezing and thawing.
Stability:	Shelf life: one year from despatch.
Gene Name:	kinesin family member 4A



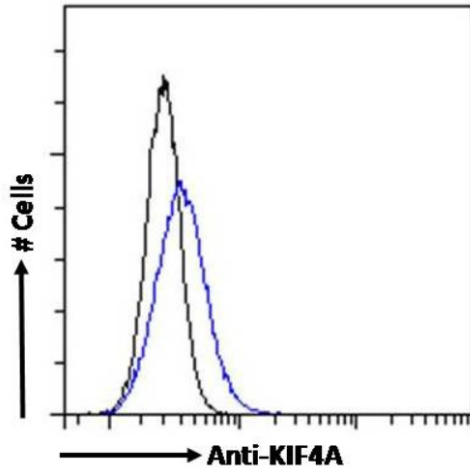
[View online »](#)

**Database Link:** [Entrez Gene 24137 Human O95239](#)

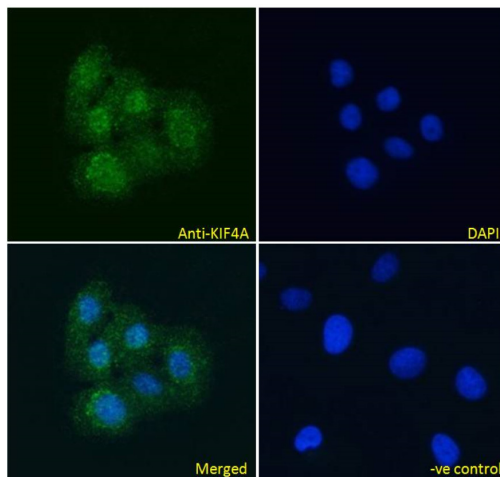
**Background:** Kinesins, such as KIF4A are required for mitotic chromosomal positioning and bipolar spindle stabilization. It is located in the nucleus and is associated with mitotic chromosomes. It is highly expressed in hematopoietic tissues, fetal liver, spleen, thymus and adult thymus and bone marrow. Lower levels are found in heart, testis, kidney, colon and lung.

**Synonyms:** KIF4A, KIF4, Chromosome-associated kinesin KIF4A, Chromokinesin-A

**Product images:**



AP16036PU-N Flow cytometric analysis of paraformaldehyde fixed HEK293 cells (blue line), permeabilized with 0.5% Triton. Primary incubation 1hr (10ug/ml) followed by Alexa Fluor 488 secondary antibody (4ug/ml). IgG control: Unimmunized goat IgG (black line) followed by Alexa Fluor 488 secondary antibody.



AP16036PU-N Immunofluorescence analysis of paraformaldehyde fixed U2OS cells, permeabilized with 0.15% Triton. Primary incubation 1hr (10 µg/ml) followed by Alexa Fluor 488 secondary antibody (4 µg/ml), showing nuclear staining. The nuclear stain is DAPI (blue). Negative control: Unimmunized goat IgG (10ug/ml) followed by Alexa Fluor 488 secondary antibody (4ug/ml).



AP16036PU-N (2 $\mu$ g/ml) staining of nuclear NIH3T3 (A) and (2ug/ml) negative control Human Ovary (B) lysate. (35 $\mu$ g protein in RIPA buffer) Detected by chemiluminescence.