

Product datasheet for **AP15877PU-N**

ZCH11 (ZCCHC11) (C-term) Goat Polyclonal Antibody

Product data:

Product Type:	Primary Antibodies
Applications:	ELISA, IHC
Recommended Dilution:	Peptide ELISA: Limit Dilution: 1/16000. Immunohistochemistry on Paraffin Sections: 2-6 µg/ml. In paraffin embedded Human Lymph Node shows nuclear staining of select lymphocytes and staining of macrophages.
Reactivity:	Bovine, Canine, Human, Mouse, Rat
Host:	Goat
Clonality:	Polyclonal
Immunogen:	Peptide from the C Terminus of the protein according to NP_001009881.1, NP_056084.1 and NP_001009882.1.
Specificity:	This antibody is expected to recognize all 3 reported isoforms.
Formulation:	Tris saline, pH~7.3 with 0.02% Sodium Azide and 0.5% BSA State: Aff - Purified State: Liquid purified Ig fraction.
Concentration:	lot specific
Purification:	Ammonium Sulphate Precipitation followed by antigen Affinity Chromatography using the immunizing peptide.
Conjugation:	Unconjugated
Storage:	Store the antibody undiluted at 2-8°C for one month or (in aliquots) at -20°C for longer. Avoid repeated freezing and thawing.
Stability:	Shelf life: one year from despatch.
Gene Name:	zinc finger CCHC-type containing 11
Database Link:	Entrez Gene 23318 Human Q5TAX3



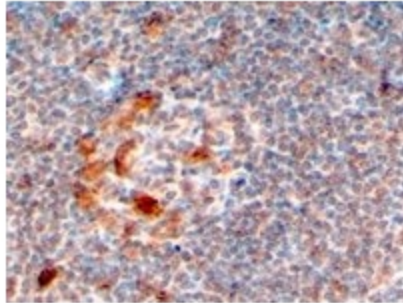
[View online »](#)

Background:

ZCH11 is known to direct cytokine expression by uridylating cytokine-targeting miRNAs. ZCH11 is a ribonucleotidyltransferase with a preference for uridine and is essential for maintaining the poly(A) tail length and stability of transcripts for interleukin-6 (IL-6), plus other specific cytokines.

Synonyms:

Terminal uridylyltransferase 4, Kiaa0191, Tut4

Product images:

ZCCHC11 antibody staining of Paraffin Embedded Human Lymph Node at 4 ug/ml. Steamed antigen retrieval with citrate buffer pH 6, HRP-staining.