

Product datasheet for **AP15321PU-N**

PP5 (PPP5C) (C-term) Rabbit Polyclonal Antibody

Product data:

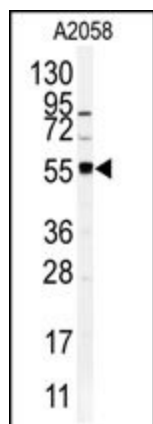
Product Type:	Primary Antibodies
Applications:	IHC, WB
Recommended Dilution:	ELISA: 1/1,000. Western blotting: 1/100 - 1/500. Immunohistochemistry: 1/50 - 1/100.
Reactivity:	Human
Host:	Rabbit
Isotype:	Ig
Clonality:	Polyclonal
Immunogen:	This antibody is generated from rabbits immunized with a KLH conjugated synthetic peptide selected from the C-terminal region of human PPP5C.
Specificity:	This antibody reacts to PPP5C.
Formulation:	PBS with 0.09% (W/V) sodium azide State: Purified State: Liquid purified Ig
Concentration:	lot specific
Purification:	Protein G column, eluted with high and low pH buffers and neutralized immediately, followed by dialysis against PBS
Conjugation:	Unconjugated
Storage:	Store the antibody undiluted at 2-8°C for one month or (in aliquots) at -20°C for longer. Avoid repeated freezing and thawing.
Stability:	Shelf life: one year from despatch.
Gene Name:	protein phosphatase 5 catalytic subunit
Database Link:	Entrez Gene 5536 Human P53041
Background:	PPP5C belongs to the PPP phosphatase family, PP-T subfamily, and may play a role in the regulation of RNA biogenesis and/or mitosis. In vitro, PPP5C dephosphorylates serine residues of skeletal muscle phosphorylase and histone H1.



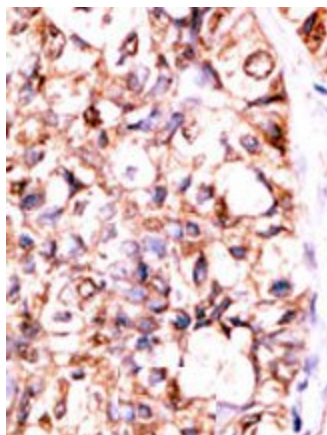
[View online »](#)

Synonyms: Protein phosphatase T, PPT, PP-t, PPP5, PP5

Product images:



Western blot analysis of anti-PPP5C Antibody (C-term) in A2058 cell line lysates (35ug/lane). PPP5C (arrow) was detected using the purified Pab.



Formalin-fixed and paraffin-embedded human cancer tissue reacted with the primary antibody, which was peroxidase-conjugated to the secondary antibody, followed by AEC staining.