

## Product datasheet for **AP15297PU-N**

### PPP3CC (C-term) Rabbit Polyclonal Antibody

#### Product data:

Product Type:	Primary Antibodies
Applications:	IHC, WB
Recommended Dilution:	ELISA: 1/1,000. Western blotting: 1/100-1/500. Immunohistochemistry: 1/50-1/100.
Reactivity:	Human
Host:	Rabbit
Isotype:	Ig
Clonality:	Polyclonal
Immunogen:	KLH conjugated synthetic peptide between 480~509 amino acids from the C-terminal region of Human PPP3CC.
Specificity:	This antibody recognizes PPP3CC.
Formulation:	PBS with 0.09% (W/V) Sodium Azide as preservative. State: Purified State: Liquid purified Ig fraction.
Concentration:	lot specific
Purification:	Prepared by Saturated Ammonium Sulfate (SAS) precipitation followed by dialysis against PBS
Conjugation:	Unconjugated
Storage:	Store the antibody undiluted at 2-8°C for one month or (in aliquots) at -20°C for longer. Avoid repeated freezing and thawing.
Stability:	Shelf life: one year from despatch.
Gene Name:	protein phosphatase 3 catalytic subunit gamma
Database Link:	<a href="#">Entrez Gene 5533 Human P48454</a>



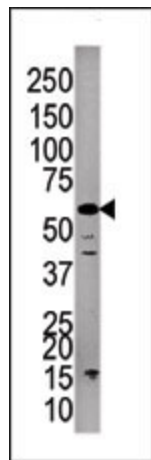
[View online »](#)

**Background:**

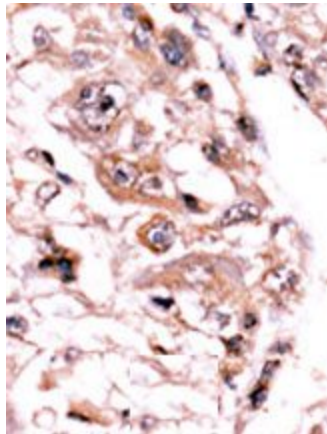
Calmodulin-dependent protein phosphatase, calcineurin, is involved in a wide range of biologic activities, acting as a Ca(2+)-dependent modifier of phosphorylation status. In testis, the motility of the sperm is thought to be controlled by cAMP-dependent phosphorylation and a unique form of calcineurin appears to be associated with the flagellum. The calcineurin holoenzyme is composed of catalytic and regulatory subunits of 60 and 18 kD, respectively. At least 3 genes, calcineurin A-alpha, calcineurin A-beta, and calcineurin A-gamma, have been cloned for the catalytic subunit. These genes have been identified in humans, mice, and rats, and are highly conserved between species (90 to 95% amino acid identity).

**Synonyms:**

CAM-PRP catalytic subunit, CNA3, protein phosphatase 2B catalytic subunit gamma

**Product images:**

Western Blot analysis: PPP3CC antibody staining of A375 cell line lysate.



Immunohistochemistry: PPP3CC antibody staining of Formalin-Fixed Paraffin-Embedded Human cancer tissue, followed by peroxidase conjugated secondary antibody and AEC staining.