

Product datasheet for **AP15294PU-N**

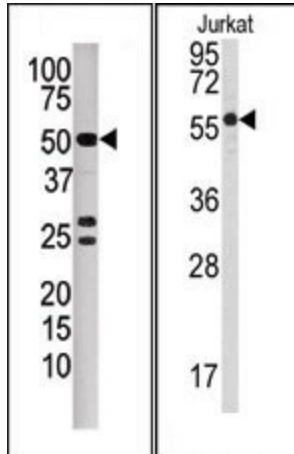
PPP3CB (N-term) Rabbit Polyclonal Antibody

Product data:

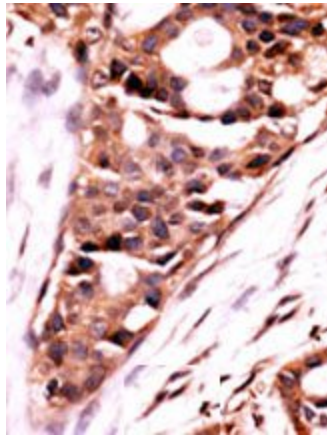
Product Type:	Primary Antibodies
Applications:	IHC, WB
Recommended Dilution:	ELISA: 1/1,000. Western blotting: 1/100 - 1/500. Immunohistochemistry: 1/50 - 1/100.
Reactivity:	Human
Host:	Rabbit
Isotype:	Ig
Clonality:	Polyclonal
Immunogen:	This antibody is generated from rabbits immunized with a KLH conjugated synthetic peptide selected from the N-terminal region of human PPP3CB.
Specificity:	This antibody reacts to PPP3CB.
Formulation:	PBS with 0.09% (W/V) sodium azide State: Purified State: Liquid purified Ig
Concentration:	lot specific
Purification:	Prepared by Saturated Ammonium Sulfate (SAS) precipitation followed by dialysis against PBS
Conjugation:	Unconjugated
Storage:	Store the antibody undiluted at 2-8°C for one month or (in aliquots) at -20°C for longer. Avoid repeated freezing and thawing.
Stability:	Shelf life: one year from despatch.
Gene Name:	protein phosphatase 3 catalytic subunit beta
Database Link:	Entrez Gene 5532 Human P16298
Background:	PPP3CB is a calcium-dependent, calmodulin-stimulated protein phosphatase. This subunit may have a role in the calmodulin activation of calcineurin.
Synonyms:	protein phosphatase 2B catalytic subunit beta, CAM-PRP catalytic subunit, CALNB, CNA2



[View online »](#)

Product images:

LEFT) Western blot analysis of anti-PPP3CB Pab in mouse kidney tissue lysate. PPP3CB (arrow) was detected using the purified Pab. (RIGHT) Western blot analysis of anti-PPP3CB Antibody (N-term) in Jurkat cell line lysates (35ug/lane). PPP3CB (arrow) was detected using the purified Pab



Formalin-fixed and paraffin-embedded human cancer tissue reacted with the primary antibody, which was peroxidase-conjugated to the secondary antibody, followed by AEC staining.